

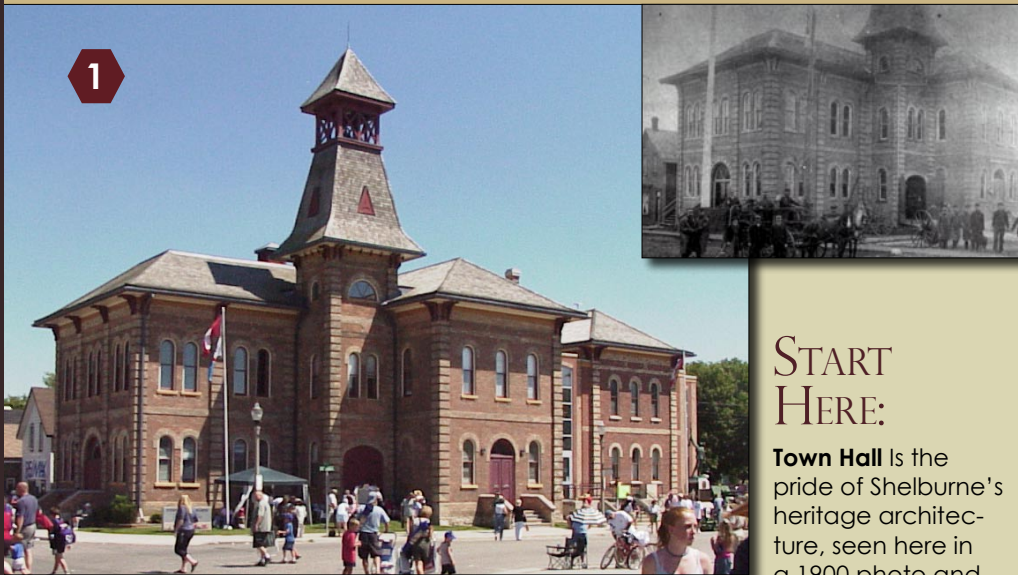
# Historic Shelburne Walking Tour

## TAKE A STROLL THROUGH TIME



**S**helburne was a late comer to the Dufferin County scene. Established in 1860 when the town's founder William Jelly built a tavern named **THE BRITISH CANADIAN HOUSE**, ideally situated in the corner of Melancthon Township where the Toronto-Sydenham Road took a sharp 90 degree turn north. Sometime in the 1860's the name was changed from Jelly's Corner to Shelburne in mem-

ory of the Earl of Shelburne and by 1869 the population had reached 70 people. While the first buildings were a hodge-podge of log and wood structures built from local timbers by local tradespeople, many of these commercial buildings were destroyed by fire in the late 1880s. All were replaced by sturdy brick buildings, of which many remain here today for you to enjoy on our walking tour.



### START HERE:

**Town Hall** is the pride of Shelburne's heritage architecture, seen here in a 1900 photo and

as it stands today. Built in 1882, it included an opera hall and lock-up, just as it does today. The plans were drawn by Town Clerk Francis G. Dunbar, who also designed the Orangeville Town Hall in 1879 when he was clerk there. The brick was manufactured at the Shelburne Brick Yards and the stone mined from the quarry at the present site of Sylvanwood Estates just east of Town. The fire hall and bell tower were later erected in 1888. The opera hall became the centre for traveling professional show troupes and Shelburne's first movie was shown here in 1926. The building was restored and renovated in the late 1990s.

### 2. 209 MAIN ST. E. - JENNIE DUDGEON'S NURSING HOME - ORIGINAL STOREFRONT SHAPE

This building was one of a series of maternity and convalescent homes that operated in Shelburne prior to the opening of a hospital in 1950. Miss Dudgeon (1894-1973) was a registered nurse who came from a farming family at Whittington in Amaranth Township. We are told she delivered over 5,000 babies in this building. She later worked at the Dufferin Area Hospital before returning to Shelburne and later retiring here.

### 3. 242 MAIN ST. E. - DR. C.L. MORGAN HOUSE

This home was erected in 1912 by Dr. Thomas Babe who was one of Shelburne's first qualified veterinarians. He served as Reeve of Shelburne ca 1907, and was leader of the regimental band. This home later became the office and home of another popular veterinarian named Dr. C.L. Morgan.

### 4. 239 MAIN ST. E. - WILLIAM SMITH HOUSE

This home was built ca 1900 by Wm. Smith, a local merchant. He was in partnership with another prominent founding citizen named Edward Berwick. Years later this was home to A.V. Gailbraith who was a member of the Sheburne Marching Band. He and his family operated a jewellery store and music shop downtown.

**Historic Tour Directions:** Follow Main Street to James Street. Turn right and follow along until you turn right again onto Andrew Street.

**History of Andrew Street** - This street was named after Andrew Jelly who owned the farm land prior to its development in the 1880s. He was the brother of town father William Jelly.

### 5. 258 ANDREW ST. - WILBERT PATTERSON HOUSE

This home was built ca 1908 by Wilbert Patterson who was a member of the Shelburne Citizens Band and the twin son of blacksmith Graham Patterson. He was employed with Chas. Mason and Company in the general store and later in the Norton Fisher and Company Limited. He also served as captain of the Hose Company on the Shelburne Volunteer Fire Brigade. His wife Lillian was the daughter of James Braiden who was an early pioneer to the Amaranth Forest. Lillian lived in the house until her death in 1974.

### 6. 256 ANDREW ST. - EDGAR PATTERSON HOUSE

This home was also built ca 1908 by Edgar Patterson who was the twin brother of Wilbert Patterson who lived next door. Edgar's mercantile career encompassed employment with Edward Berwick and Company and later in 1915 he was the owner of the John D. Harrison grocery store. He was also a member of the Shelburne Citizens Band. Like his twin he married another daughter of James Braiden named Amy. She became a major promoter of the Women's Institute and began collecting community histories called the Tweedsmuir Histories now housed at the Dufferin County Museum and Archives.

### 7. 250 ANDREW ST. - THE ANNIE BABE HOUSE

This is one of the houses in Shelburne erected by a woman, Annie Babe in 1905. Annie was the widow of Thomas Babe, a well known local veterinarian. It was later sold to John Best, MP for Dufferin County who was a retired Mono farmer. It is believed that this house was once owned by C. Bertram Horton

ca 1927. He operated the Conover Cheese Factory and was the grandfather of "Tim" Horton.

### 8. 241 ANDREW ST. - THE CLARRIDGE

**HOUSE** This home was built ca 1895 and occupied from 1895 to 1951 by the Clarridge family who were founders of the Shelburne Economist, later the Shelburne Free Press and Economist in 1928. It was then purchased by Mabel and Leonard Halbert. Mabel was the author of a three-volume memoir of her life in Dufferin County called "Memoirs of an Old Cog".

**Historic Tour Directions:** Turn South along Victoria Street.

**History of Victoria Street** - This was the last stretch of the Victoria Road which ran from Orangeville through Mono and Amaranth north to Shelburne to meet the Toronto-Sydenham Road. The Victoria Road was a stage coach route with stops at Camilla, Whittington, Rich Hill and Coleridge. The stage coach was later replaced by the railway.

### 9. 224 VICTORIA ST. - GEORGE CANNING

**HOUSE** This is a second Empire Cottage style home featuring a mansard roof and projecting bay windows which was a rare style of architecture for Shelburne. It was built ca 1880s and owned by George Canning who was a carpenter and builder. He became the town constable in 1884 and was later Dufferin County's High Constable from 1891-95. He also owned Shelburne Monument Works and also built the Water tower and Windmill in 1890 which is the present site of the town's water tower.

**Historic Tour Directions:** Follow Victoria Street to Joseph Street. Turn right and stop here.

### 10. 308 VICTORIA STREET - THE STABLING HOUSE

This first lot located on the south west corner at 308 Victoria Street was sold by William Jelly to Dr. Thomas Norton in 1895. He hired the brick mason Charles Scarborough who operated the Shelburne Brickyards to build the house for him. It was later known as a "stabling house". While most folk visiting town would pay to 'stay' their horses and carriage at the town drive shed some country folk were invited to house their horses here in exchange for goods like hay, grain or even a bottle of whiskey at Christmas. You can see from its location that horses could easily travel along the back laneways towards the downtown.

**Historic Tour Directions:** Go north at Joseph Street through the back laneway towards Wellington Street. Turn left and follow Wellington up to Adelaide Street. Turn right where you will see Sawyers Feed Mill. Continue to Main Street and turn right.

### 11. 138 MAIN ST., W. (NORTH SIDE)

**- WATSON'S BAKERY** This building was built in 1910 originally as the Watson's Bakery. A.W. Watson originally from Priceville Ontario was the son of a coffin maker and undertaker. In the early 1900's this was the place to buy ice cream cones, jaw breakers, jelly rolls, and a bottle of cold sarsaparilla. A.W. Watson was the grandfather of Reverend Bruce Besley, a well known Rotarian and public figure for years.

### 12. 118 MAIN ST., W. (NORTH SIDE) -

**THE ROYAL HOTEL** Originally built in 1884 as a wooden building, this hotel was rebuilt as a brick building in 1886 after a fire destroyed its predecessor. This building still has the original mansard style windows.

### 13. 149 MAIN ST. W. (SOUTH SIDE)

**- THE QUEEN'S HOTEL** Erected ca 1887, this building was operated in the 1890's by George Canning who was also the town constable and later Dufferin's High Constable from 1891-95.

### 14. 147 MAIN ST., W (SOUTH SIDE)

#### **- THE JELLY BLOCK**

This building was erected in 1883 and known by all as the Jelly Block. Town father William Jelly operated the building as a general merchandise store.

**Historic Tour Directions:** At the traffic lights turn left onto Owen Sound Street.

### 15. 100 MAIN ST. (CORNER OF MAIN AND OWEN SOUND ST.) - THE BERWICK BLOCK

**BLOCK** Built in 1897 as a commercial building matching the Hannah Block next door which also opened at the same time, it was built to house the various businesses of Edward Berwick who sold everything from hardware to ladies hats and eggs. As a very successful businessman, he became known as Shelburne's other town father. The third floor was a lodge room for the Ancient Order of United Workmen. This building has an unusual rounded front and galvanized iron cornices. Construction of the building was \$900. At the turn of the century the corner section became the site of the Union Bank of Canada.



### 16. 106 MAIN ST. E. - THE HANNAH BLOCK

This building was also built in 1897 as part of the commercial block at the corner. Original stained glass - some of which still exists today - was made by the NT Lyon Co. of Toronto. The Hannah Block together with the Berwick Block make up the most significant 3 story commercial buildings in downtown Shelburne.



### 17. 116 OWEN SOUND ST. - SHELBURNE POST OFFICE

**OFFICE** Officially opened as the new post office on January 1st, 1915, the post office had originally been located inside Town Hall. This building was made of stone quarried from the Shelburne Stone Quarry located on the present site of Sylvanwood estates. It was open for 45 years until a new post office was then built.

**Historic Tour Directions:** Follow Owen Sound Street north and then turn left onto First Avenue. View houses on both the north and south side of the street.

### 18. 108 FIRST AVE. - THE BATES HOUSE

This house was built in 1906 by cattle drover Robert John Bates and his wife Catherine Hinton who were originally from Bowling Green. After 10 years of farming Robert embarked on a successful career buying and selling livestock. He shipped his livestock from the Shelburne CPR stockyards and later retired in 1935 when the Shelburne stock-

yards closed.

### 19. 112 FIRST AVE. - THE ZINN HOUSE

This house was built in 1914. It was later purchased from O'Flynn estate in 1921 by Dr. Harry Zinn and his wife Dolce Berwick. After serving in WW I, Dr. Harry Zinn opened his dental practice in Shelburne. He was the charter president of Shelburne Rotary Club in 1938. He was a noted lacrosse player and was a member of several championship Shelburne teams. He was also a keen hockey player and curler and was a referee in all three sports. In addition, Harry was active as an organizer of juvenile lacrosse programs.

### 20. 111 FIRST AVE. - THE WILLIAM

**JELLY HOUSE** This house was built in 1891 on land that was originally a farm purchased by Shelburne's town founder William Jelly. He subdivided the south part of his farm in 1872 laying out the streets and lots and building this grand home for himself. He was Shelburne's great booster and served on Melancthon township council from 1873-76. He was the first MPP for Dufferin from 1875 to 1883 and also served as the first Reeve of Shelburne from 1879 to 1893 and again from 1898 until his death in 1900. This remained his family home where he died on October 20th 1900.

### 21. 116 & 120 FIRST AVE. DUPLEX

**- THE CRAWFORD HOUSE** This house was built ca 1922 by James Crawford and his son Maurice Crawford. It was built on the site of the former Wilson Foundry & Showrooms. The Crawford family ran a hardware business on Main Street until 1937. In 1927 the east half of the duplex was purchased by Thomas Ostrander. He was related to the Ostrander family from Melancthon who founded Ostrander Jewellers - a well known chain in Toronto.

### 22. 124 FIRST AVE. - THE WITTEN

**HOUSE** Prior to 1902 all the land from here east to the lane was an industrial or manufacturing site. This Queen Anne Revival frame house was later built in 1908 by carpenter James Whitten and his wife Mary A. Witten on the site of the Victoria Curling Rink. It was his family home until his death in 1918. Fred and Helen Claridge, who were second generation owners and publishers of the Free Press and Economist, purchased the home in 1940.

### 23. 119 FIRST AVE. - THE MUNN HOUSE

William Munn, a livery stable operator and village night watchman, built this house in 1880 and lived here with his wife Mary Jane Munn until 1920 when the house was sold to T.Y. McKay. T.Y. ran the family blacksmithing business along with the Shelburne business that produced The "McKay Tire Cooler and Setter." T.Y. severed the property in 1926 and sold the original house to John Anthony "Tone" Hughes who was the manager of Shelburne creamery.

### 24. 123 FIRST AVE. - JOHN A. HUGHES

**HOUSE** This frame house was built in 1928 by John A. Hughes after the property was subdivided to build three houses. One of these homes, situated on 127 First Avenue, no longer exists.

### 25. 128 FIRST AVE. - THE MILLINERY

This framed 1½ storey house is thought to be the oldest in Shelburne. It was built in 1882 by Shelburne carpenter Simon Gilpin. Simon later died in 1886 and the home was then sold to Eliza Jane White who was the young widow of shoemaker Henry White. Eliza Jane made a home for her 9 children here where she operated a Millinery shop. The home remained in the White family for more than 50 years. Eliza Jane's son Henry founded H.

# TAKE A STROLL THROUGH TIME



White and Company in 1899 operating the large grain elevator at the Shelburne station and expanded it into a number of farm crop, feed and seed lines.

## 26. 127 FIRST AVE.

### - THE MCKAY HOUSE

This brick Arts and Crafts style bungalow with original fieldstone porch was built in 1930 by Thomas Young McKay and his wife Elnora. The house has many fine craftsman details, for example its windows and light fixtures. Mr. McKay operated a family blacksmith business. He and his brothers were celebrated lacrosse players in the 1890s. He was also a noted "fancy skater," the first figure skater in Shelburne.

## 27. 135 FIRST AVE. - THE FISHER HOUSE

This house was originally built as a frame bungalow in 1878 by Catherine and Duncan Fisher. Later, in 1907, they had it bricked. Samuel Fisher ran a barber shop on the corner of Main and Adeline Street from 1896 to the 1930s. The Fisher family sold the house in 1913 to Robert Smith who was a butcher and continued to live here until his death in 1955. He was a member of the Shelburne "Bluebirds" Lacrosse team.

## 28. 140 FIRST AVE. - THE ROONEY

**HOUSE** This red brick Bay & Gables style home along with its carriage house were built from locally manufactured brick in 1889 by local merchant Morrison Rooney and his wife Mary H. McLachlan. Morrison operated The Corner Store (where the TD Bank is now located) with his brother J.J., and was Treasurer of the Village in 1905, Treasurer of Shelburne School Board, and a member and Treasurer of the 36th Regimental Band.

## 29. 143 FIRST AVE. - THE MCVANEL

**HOUSE** This house was purchased in 1886 by Duncan McVanel who began his career as clerk of the Shelburne Post Office in 1884. He became the post master in 1903 and remained in that position until 1931. In 1916 the house was sold to Pearson Fewster who operated a local garage where Massey Harris farm implements were sold. The Fewsters were early settlers in Melancthon.

## 30. 144 & 148 FIRST AVE. DUPLEX - THE

**MASON HOUSE** This brick Victorian duplex house was built in 1884 by two of Shelburne's early General Merchants and partners - Charles Mason and James William Foy. Charles Mason served on Village Council, the Shelburne School Board, Mechanics Institute, Fair Board, Masonic Lodge, L.O.L. and the Hydro Commission. His son Harold Mason (one of his three children) was killed in action during W.W.I in Givenchy, France. His original partner James Foy left the business and John F. Miller became his new partner in 1888, also residing in the other half of the house.

**Historic Tour Directions:** Look towards the end of First Avenue where you will see an open area between First and Second Avenue. (formerly Station Street). This is where the railway station was once located.



## 31. THE TRAIN STATION

The Toronto Grey and Bruce Railway reached Shelburne in 1873. Built to Orangeville in 1871,

there was a controversy over the best route to Owen Sound. The company finally opted for the most direct route north from Orangeville Junction (later called Fraxa Junction) via Shelburne, Dundalk, and Markdale to Owen Sound and later taken over by CP in 1884. For 25 years, this was the main CPR connection to the west, with the Steamboat Express carrying Toronto passengers to boats at Owen Sound. The boats connected to the CPR mainline for Winnipeg at Fort William. There were 4 passenger trains a day and a number of freight trains on the line.

**Historic Tour Directions:** Follow Gordon Street past Second and Third Streets where you will see the town's water tower over to the right on Third Avenue.



(where several newer homes have been built) is the former site of the Shelburne Junior School that burned down in the mid-1990's.



the left hand side of Gordon Street in Rotary park. This building was rebuilt inside the Dufferin County Museum and Archives, located near Rosemount.

**Historic Tour directions:** Continue towards the high school and turn right onto Fourth Avenue and follow along to Owen Sound Street.

## 34. 504 OWEN SOUND ST. - HILLHOUSE

**JELLY HOUSE** The original property was owned by John Jelly, brother of William Jelly. The home was built in 1883 and was later registered to Mary Jane Jelly and her husband William Hillhouse in 1895. John Jelly and William Hillhouse had previously entered a partnership and displayed the 157 pieces of the Amaranth Mastodon which was on

display in Shelburne and later toured throughout the fall fair months of August, September and October, 1891 and 1892 where John took the show on the road.

William Adams Hillhouse was engaged to equip and operate a new tin shop for Archie Noble in 1876. The tin shop became the classroom for an untold number of apprentice finsmiths. They manufactured stove pipes, eavestroughs, milk pails, washtubs and numerous tin and galvanized iron objects required in a settled community. In 1907 William bought out the real estate, loans, insurance and travel booking agency of W.L. Smith.

## 35. 416 OWEN SOUND ST.

This house was built ca 1893 by Alexander Smith who became Shelburne's first Railway Station Agent in 1892. Prior to this he joined Edward Berwick back in 1883 and later purchased the local undertaker's business in 1887. He sold it in 1892 when he built this house. He left for the west in 1907 and the house was later sold to lawyer David E. Dean in 1916. He was active in municipal politics and became Warden of Dufferin County in 1926. He also produced a manuscript for a history of Dufferin County about 1952 that was never published.

## 36. 404 OWEN SOUND ST. - "BELLE

**AIRE" COTTAGE** A single storey brick cottage with projecting bays are the remnants of a grand 3 storey house built in 1890 by Dr. Thomas Norton. The house was wired for electricity when it was built, although there was then no local source of supply. Shelburne's first telephone was installed here in 1891. A minister's son from Horning's Mills, Norton graduated from McGill Medical School and then moved to Shelburne in 1884 and practiced with Dr. Barr until his death in 1901. The house was sold by his widow in 1911 and it burned down in 1929. The first floor was salvaged and was converted to a cottage style house which remains today.

## 37. 324 OWEN SOUND ST. - PALMER

**HOUSE** This house was built ca 1889 by Melazine and John Palmer who were retired general merchants from Horning's Mills. Their daughter Erma



married popular Dr. John Barr who became the first MPP for Dufferin in 1875. He later became the first federal MP for Dufferin in 1904 and was again elected in 1908. Victor G.H. Phillips and his wife Eleanor Lindsay later purchased the house in 1924. Victor served in the First World War enlisting in the infantry. He later transferred to the Royal Flying Corps. He again went overseas in the Second World War advancing to the rank of Lieutenant Colonel. He served on many boards and committees for his community, was Town Councillor and Reeve of the Village, and was elected Warden of Dufferin County in the 1950's.

### 38. 320 OWEN SOUND ST. - PHILLIP'S

**HOUSE** This house was built as the rectory for St. Paul's Church. In 1919 the church sold this property and bought the former Dunbar house across the old churchyard. Shelburne lawyer J.R. Layton and his wife Edith lived here for five years and then sold it to Victor and Eleanor Phillips. A veteran of the First War, he had served in the infantry and the Loyal Flying Corps. He served overseas in the Second War advancing to the rank of Lieutenant Colonel. Returning to Shelburne he resumed the family hardware business operated by his wife while he was away. He was Councilor and Reeve of Shelburne and Warden of Dufferin County and an active member of Shelburne and Orangeville hospital boards.

### 39. 316 OWEN SOUND ST. - WANSBOROUGH HOUSE

Built ca 1927 this home was owned by Shelburne Dentist Elgin Wansborough along with his wife Ruth and their four children. Elgin went on to win the Military Medal for gallantry as a machine gunner in WWI and between wars he was an officer in the Lorne Scots militia. He was then appointed to the Canadian Dental Corps in 1939 and served overseas between 1942-1945. Later he was appointed Director General of Dental Services in 1946 at the Department of National Defence in Ottawa. By 1965 he was appointed Colonel Commandant of the Royal Canadian Dental Corps.

### 40. 312 OWEN SOUND ST. - ST. PAUL'S

**CHURCH** St. Paul's church was originally built during 1874 alongside the first cemetery in the north end of Shelburne. The cemetery was originally laid out by William Jelly in 1865. A decision was made in 1912 to rebuild the church at its present site. St. Paul's opened on December 14th 1913.

### 41. 304 OWEN SOUND ST. - F.G. DUNBAR HOUSE (ST. PAUL'S RECTORY)

This house was built about 1878 by Francis Grant Dunbar and his wife Matilda who had arrived from Orangeville. Dunbar was both an architect and a lawyer and became the first Clerk of the Village. Among the buildings he designed were the Orangeville Town Hall (1875) and Shelburne Town Hall (1882). His house was later sold to Henry White in 1904 and then to the Incumbent and Warden's of St. Paul's Church in 1919 for use as the Rectory.

### 42. 220 OWEN SOUND ST. - THE BUENA

**VISTA** This handsome red brick 2½ storey was built in 1904 by Fred H. Silk, manager of Halstead's Bank; a private bank originating in Mt. Forest. Silk, who came from Woodstock, Ontario, continued as manager of the Union Bank until 1917 when the family moved to Toronto.

### 43. 200 OWEN SOUND ST. - TRINITY

**UNITED CHURCH** The lot for this house was purchased in 1902 as the site for Knox Presbyterian. It was to replace the church built in 1876

on Main Street. The cornerstone was laid in July 1902. Later a union of Methodist and majority of Presbyterians in 1925 created the United Church of Canada. Shelburne had 2 United Church congregations, the Knox and Wesley until 1939 when they merged and opted to use the Knox Building thereby renaming it the Trinity United Church.

**Historic Tour Directions:** Turn left onto First Avenue on the east side of Owen Sound Street and follow up to William Street.



### 44. SHELburne "CARNEGIE" LIBRARY

Organized at a public meeting in January 1911 the construction

of the library was underway in June of the same year with the financial assistance of the Carnegie Library Foundation. The official opening was February 12th, 1912. The vault in the basement was added in 1937. The current renovation and expansion to the Library were completed in June 2004.

**Historic Tour Directions:** Follow William Street North to O'Flynn Street.

**History of William Street** - This street was named after the Town Father William Jelly.

### 45. 308 WILLIAM ST. - W.D. ALLEN

**HOUSE** The original lot was sold by William Jelly to Melancthon farmer W.D. Allen in 1883 for \$65. He built the house in 1883 but it is unclear as to whether he ever lived here since he later sold the house in 1889 for \$600 while farming in Osprey Township. Like many others who purchased lots and built houses in Shelburne during the "roaring eighties" speculating on the bright future of the new village, some made money while others were devastated by the depression of the 1890s.

### 46. 336 WILLIAM ST. - THE SLEIGHT-

**HOLM HOUSE** This house was built ca 1888 by Shelburne butcher James Sleightholm who operated a butcher shop in this house as well as one on Main Street in Shelburne.

### 47. 344 WILLIAM ST. - THE CAMPBELL

**HOUSE** This house was built about 1890 by Fred Campbell who was a merchant in Shelburne. It was later sold to William Silk Jr. and his wife Sarah who then lived here from 1899 to 1946.

**Historic Tour Directions:** At William Street and O'Flynn cross over to the Fairgrounds.

### 48. THE FAIRGROUNDS

The Melancthon Agricultural Society held its first fair in 1867 in Masonville and moved the event to Shelburne in the mid 1880s. In 1890 the Agricultural Fair moved to the present site in co-operation with the Shelburne Driving Club which held horse races and built the first grandstand. They changed their name at the time to the Dufferin Central Exhibition and in the mid 1940's to the Shelburne Fall Fair held annually, the third weekend in September.

**Historic Tour Directions:** Leaving the fairgrounds site now go back south along William Street, south to First Avenue.

### 49. CORNER OF WILLIAM ST. AND FIRST AVE. - SHELburne LEGION, BRANCH 220

The legion is located in the building originally erected as the Shelburne Curling Rink in 1926. It was later purchased at a cost of \$10,000 and presented by the shareholders of the group following W.W. II for the use of the Great War Veterans Association.



### 50. SHELburne WESLEYAN METHODIST CHURCH

This church was built by a local craftsman in 1888 with its doors, sash, pew and furnishings made at the Shelburne Planing Mills. The Bell and Bell

Tower along with the stained glass were added in 1902-03. The bell was made in Troy, New York, and weighs 1,015 lbs. The church closed in 1925 after the United Church Union and was subsequently used by the Masonic Order. In 2000 it was converted into a private residence.

**Historic Tour Directions:** Turn right from William Street onto Main Street

### 51. WILLIAM ST. AND MAIN ST. - JACK

**DOWNY PARK** Original site of the horse stables for the Mansion House Hotel.

### 52. 122 MAIN ST. - FORMER SITE OF

**W.J. SAWYERS BOOT AND SHOES** The store had a large 6 foot red woman's shoe as a sign. It quickly became a local landmark with teenagers trying to jump up and touch the sign for entertainment.

**Historic Tour Note:** Look across the street



### 53. 107 MAIN ST. - THE HILL BLOCK

This building was erected in 1906 and was known as the Hill Block. It housed Din Madill's Butcher Shop and upstairs was home to the offices of The Economist newspaper known locally as the "popular paper."

*Thank you for taking this historic walking tour. We hope you have become versed on some of the history of the Town of Shelburne.*

A Partnership Initiative of:



#### Heritage Shelburne

Town of Shelburne  
Municipal Office  
203 Main St. E.  
Shelburne, Ont.  
L0N 1S0

[www.townofshelburne.on.ca](http://www.townofshelburne.on.ca)

T / 519-925-2600,

F / 519-925-6134

Chair: Geoff Dunlop

Co-Chair: Lynda Buffett

#### Dufferin County Museum & Archives

P.O. Box 120  
Rosemont, Ontario  
L0N 1R0

Toll Free: 1-877-941-7787

T / 705-435-1881

F / 705-435-9876

[www.dufferinmuseum.com](http://www.dufferinmuseum.com)



*Shelburne Community  
Revitalization Project*