

## ADDENDUM No. 2

---

**Date:** January 7, 2026      **Project No:** M20051  
**Project Name:** Request for Proposal: Town of Shelburne, Well 1 Upgrades  
**To:** All Bidders

This Addendum consists of 5 pages total.

---

Please make the following changes / additions to the Request for Proposal Document. Bidders are responsible to ensure that all addenda have been received. Bidders shall be required to acknowledge addenda in the space provided in Section B of the Form of Proposal.

This addendum will form part of the terms, conditions and specifications outlined in the above noted Request for Proposal Contract Document. All other components of the Bid documents shall remain unchanged.

---

\*\*\*REMINDER: BIDDERS MUST IDENTIFY THIS ADDENDA IN THE SPACE PROVIDED IN SECTION B OF THE FORM OF PROPOSAL\*\*\*

---

### GENERAL INSTRUCTIONS

1. Bidders shall ADD the following drawings to the Contract Documents (3 pages):
  - M1: MECHANICAL SCHEDULES, LEGEND AND DETAILS
  - M2: EXISTING BUILDING LAYOUT
  - M3: PROPOSED BUILDING LAYOUT

### QUESTIONS AND RESPONSES

*Question 1: While this work is being completed, is the existing well to be used for municipal water supply?*

*Response 1: No, the existing well is not currently in use.*

---

I have read the foregoing Addendum and have considered it in my Proposal.

\_\_\_\_\_  
Bidder's Name

\_\_\_\_\_  
Signature

\_\_\_\_\_  
Date

M20051\_Add#2\_FINAL\_2025-01-07.docx



DRAWING LIST — MECHANICAL	
M1	MECHANICAL SCHEDULES, LEGEND AND DETAILS
M2	EXISTING BUILDING LAYOUT
M3	PROPOSED BUILDING LAYOUT

EXHAUST FAN SCHEDULE										
TAG	DESCRIPTION	LOCATION	AIR FLOW L/S (CFM)	E.S.P. Pa (inWC)	ELECTRICAL			MAKE	MODEL	ACCESSORIES/REMARKS
					V/ø/Hz	AMPS (FLA)	HP			
EF-1	DIRECT DRIVE UPBLAST CENTRIFUGAL ROOF EXHAUST FAN	ELECTRICAL ROOM	472 (1000)	75 (0.3)	115/1/60	2.85	0.25	GREENHECK	CUE-099-VG	C/W 14" PITCHED R4.3 INSULATED ROOF CURB (GPIP) SLOPE TO MATCH EXISTING, VARI-GREEN EC MOTOR AND SPEED CONTROLLER, AND BIRDSCREEN
EF-2	DIRECT DRIVE UPBLAST CENTRIFUGAL ROOF EXHAUST FAN	CHEMICAL ROOM	57 (120)	100 (0.4)	115/1/60	1.3	0.07	GREENHECK	CUE-060-VG	C/W 14" PITCHED R4.3 INSULATED ROOF CURB (GPIP) SLOPE TO MATCH EXISTING, VARI-GREEN EC MOTOR AND SPEED CONTROLLER, AND BIRDSCREEN

DAMPER AND LOUVRE SCHEDULE						
TAG	DESCRIPTION	WIDTH	WIDTH	MAKE	MODEL	ACCESSORIES/REMARKS
MD-1aa	INSULATED MOTORIZED DAMPER	400	400	TAMCO	9000	2-POSITION 120V ACTUATOR, (FAIL OPEN) NORMALLY OPEN END SWITCH
MD-1ab	INSULATED MOTORIZED DAMPER	400	400	TAMCO	9000	2-POSITION 120V ACTUATOR, (FAIL OPEN) NORMALLY OPEN END SWITCH
MD-1b	INSULATED MOTORIZED DAMPER	300	300	TAMCO	9000	2-POSITION 120V ACTUATOR, (FAIL OPEN) NORMALLY OPEN END SWITCH
MD-2a	INSULATED MOTORIZED DAMPER	150	150	TAMCO	9000	2-POSITION 120V ACTUATOR, (FAIL OPEN) NORMALLY OPEN END SWITCH
MD-2b	INSULATED MOTORIZED DAMPER	300	300	TAMCO	9000	2-POSITION 120V ACTUATOR, (FAIL OPEN) NORMALLY OPEN END SWITCH
LV-1aa	EXTRUDED ALUMINUM LOUVRE	400	400	GREENHECK	ESD-403	C/W BIRD SCREEN
LV-1ab	EXTRUDED ALUMINUM LOUVRE	400	400	GREENHECK	ESD-403	C/W BIRD SCREEN
LV-2	EXTRUDED ALUMINUM LOUVRE	300	300	GREENHECK	ESD-403	C/W BIRD SCREEN

PLUMBING AND SANITARY DRAINAGE EQUIPMENT SCHEDULE			
TAG	FIXTURE	DESCRIPTION	ACCESSORIES/ REMARKS
HWT-1	HOT WATER TANK	AO SMITH, DEL-20-2, 20 GALLONS NOMINAL STORAGE CAPACITY, 6USGPH RECOVERY @ 100°F, 2kW INPUT, 208V, 1Ph, CSA CERTIFIED, 22.25"H, 21.75"øW, INLET/OUTLET 3/4" NPT, APPROX. SHIPPING WEIGHT 73LBS	C/W ASME RATED TEMPERATURE AND PRESSURE RELIEF VALVE
EX-1	EXPANSION TANK	AMTROL THERMAL EXPANSION TANK, MODEL ST-5C-DD, ASME, HEAVY DUTY BUTYL NSF/ANSI 61 DIAPHRAGM, TANK VOLUME: 2.06AL, 0.96AL ACCEPTANCE VOLUME, 3/4" CONNECTION, 10LBS	
EW-1	EYEWASH STATION	GUARDIAN, G1825P, PEDESTAL MOUNTED, PLASTIC BOWL, 1/2"ø INLET, 1-1/4"ø DRAIN, ANSI Z358.1-2014 COMPLIANT.	PROVIDE GUARDIAN G6020 THERMOSTATIC MIXING VALVE, SET TO 70°F, INDIRECTLY ROUTE DRAIN PIPING TO NEW FUNNEL AND STRAINER
BFP-1	BACKFLOW PREVENTOR	WATTS, REDUCED PRESSURE ZONE ASSEMBLY SERIES 009, 3/4"ø, LEAD FREE	C/W 909AGF DRAIN OUTLET FITTING AND STRAINER, INDIRECTLY ROUTE DRAIN PIPING TO NEARBY FLOOR DRAIN
PRV-1	WATER PRESSURE REDUCING VALVE	ZURN, NR3XL, 3/4"ø, PRESSURE RANGE 15-75 PSI, MAX TEMP 140°F, MAX INLET PRESSURE 400 PSI	
TSP-1	TRAP SEAL PRIMER	MIFAB, MI-100-5, ENCLOSED ELECTRONIC TRAP SEAL PRIMER, LEAD FREE, 1-5 OPENING PORTS WITH CABINET	C/W CABINET COVER BOLTED TO CABINET FRAME AND NON-HINGED 16 GAUGE POWDER EPOXY COATED STEEL WHITE, 120V

ELECTRIC HEATER SCHEDULE						
TAG	DESCRIPTION	V/ø/Hz	AMPS	HEATING CAPACITY (kW)	ACCESSORIES/ REMARKS	EQUIPMENT PROVIDED BY:
FFH-1	FORCED FAN HEATER	208/1/60	5.4	1.125	- BUILT IN THERMOSTAT AND CONTROL KNOB ~ SURFACE MOUNT	DIVISION 16, ELECTRICAL

HVAC GRILLES SCHEDULE					
TAG	SERVICE	DESCRIPTION	MAKE	MODEL	ACCESSORIES/REMARKS
S1	SUPPLY AIR	LOUVERED GRILLE	EH PRICE	610	SIZE: AS INDICATED ON DRAWING, 0" DEFLECTION, COLOUR CONFIRMED BY OWNER

SEQUENCE OF OPERATIONS:  
1. EF-1 (ELECTRICAL ROOM): IF ROOM TEMPERATURE SENSED BY THE THERMOSTAT (TV-1) EXCEEDS 25°C, MD-1aa, MD-1ab AND MD-1b OPEN AND THEIR END SWITCHES START EF-1. IF EF-1 CONTROLLER IS IN HAND POSITION, ASSOCIATED DAMPERS MD-1aa, MD-1ab AND MD-1b OPEN AND THEIR END SWITCHES START EF-1. WITH EF-1 OFF, RELATED DAMPERS MD-1aa, MD-1ab AND MD-1b ASSUME A CLOSED POSITION.  
2. EF-2 (CHEMICAL ROOM): ADJUSTABLE TIMER TM OPENS MD-2a AND MD-2b AND THEIR END SWITCHES START EF-2 AND CONTINUES ITS OPERATION FOR 10 MINUTES PER HOUR. IF ROOM TEMPERATURE SENSED BY THE THERMOSTAT (TV-2) EXCEEDS 25°C THEN MD-2a AND MD-2b OPEN AND THE END SWITCHES START EF-2. IF EF-2 CONTROLLER IS IN HAND POSITION, ASSOCIATED DAMPERS MD-2a AND MD-2b OPEN AND THEIR END SWITCHES START EF-2. WITH EF-2 OFF, RELATED DAMPERS MD-2a AND MD-2b ASSUME A CLOSED POSITION.  
4. ELECTRICAL ROOM ELECTRIC HEATERS (UH-1 & UH-2): ELECTRIC HEATERS SHALL OPERATE FROM THEIR ASSOCIATED THERMOSTAT (TH-1) TO MAINTAIN A SPACE TEMPERATURE SET POINT OF 10°C.  
4. ELECTRICAL ROOM ELECTRIC HEATER (FFH-1): ELECTRIC HEATER SHALL OPERATE FROM ITS BUILT IN THERMOSTAT TO MAINTAIN A SPACE TEMPERATURE SET POINT OF 10°C.  
5. CHEMICAL ROOM ELECTRIC HEATER (UH-3): ELECTRIC HEATER SHALL OPERATE FROM ITS ASSOCIATED THERMOSTAT (TH-2) TO MAINTAIN A SPACE TEMPERATURE SET POINT OF 10°C.  
6. SEE ELECTRICAL DRAWINGS FOR WIRING CONTROL DIAGRAMS.



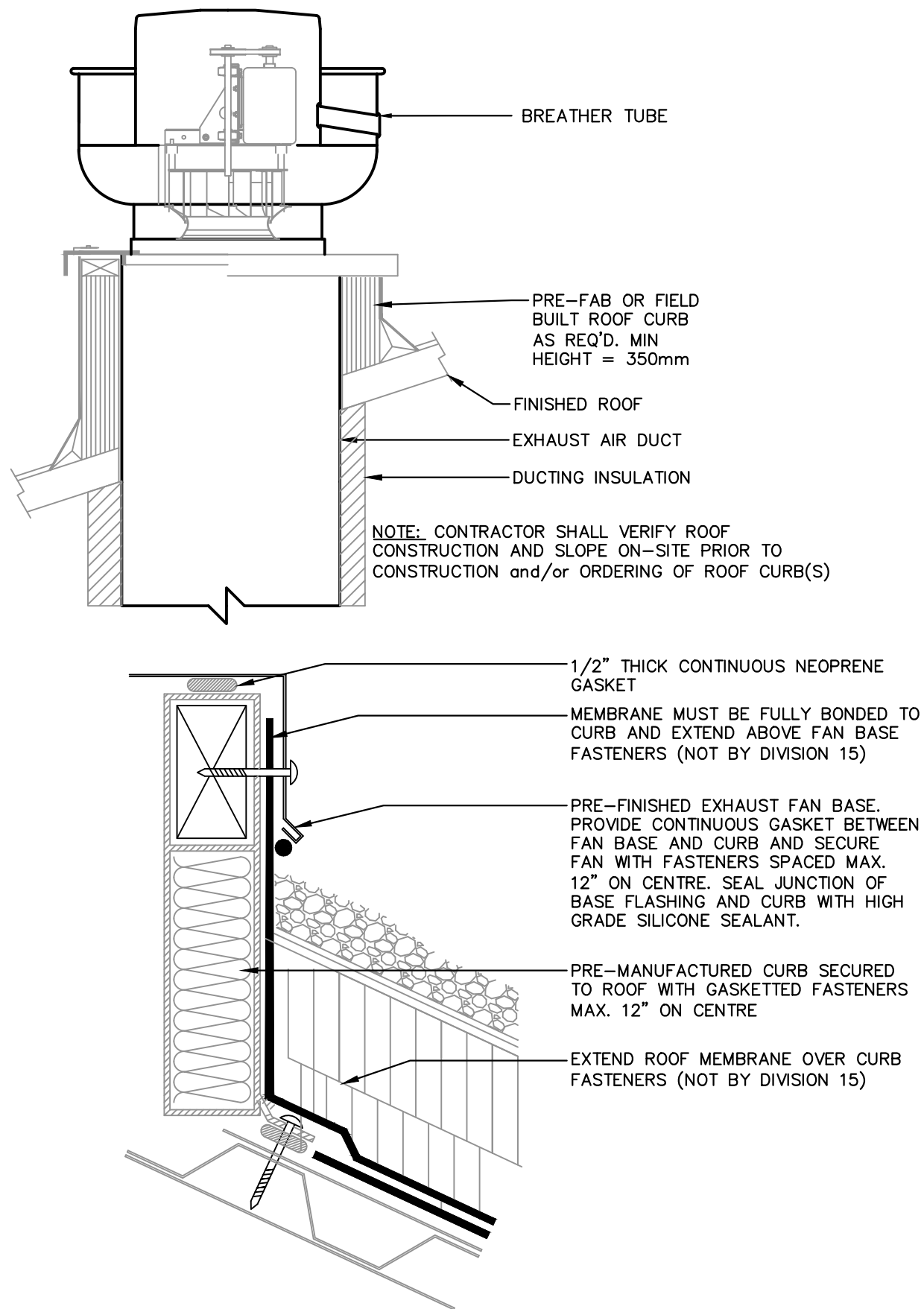
EXISTING INDIRECT  
DRAINAGE PIPING FOR  
CHEMICAL EQUIPMENT TO  
BE RELOCATED. ROUTE  
NEW DRAINAGE PIPING AS  
REQUIRED TO DRAIN TO  
EXISTING FLOOR DRAIN

REMOVE EXISTING  
EYEWASH AND  
ASSOCIATED  
DRAINAGE PIPING

EXISTING DRAIN  
TO BE  
RE-USED FOR  
NEW EYEWASH  
(EW-1)

### 3 EXISTING EYEWASH AND FLOOR DRAIN

SCALE: NTS



### 4 TYPICAL EXHAUST FAN ROOF CURB DETAIL

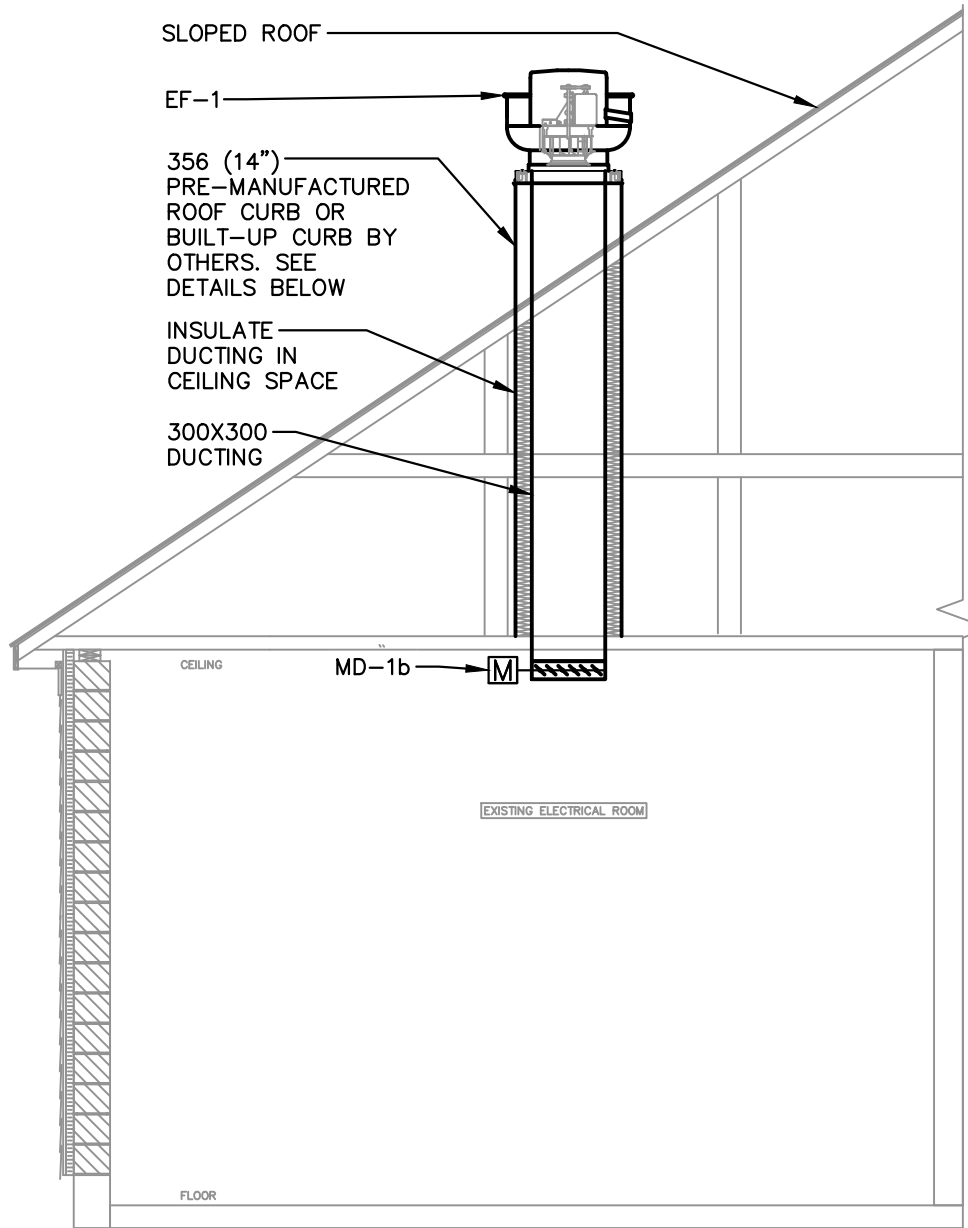
SCALE: NTS

MECHANICAL LEGEND	
	EXHAUST DUCT
	SUPPLY DUCT
	VENTILATION THERMOSTAT
	HEATING THERMOSTAT
	DEMOLITION
	AIR FLOW DIRECTION
	LOUVER
	DOW
	DHW
	PIPE DOWN
	PIPE UP
	DIFFUSER, GRILLE OR REGISTER
	REVISION CLOUD
	SYMBOL INDICATES A REVISION, (# DENOTES REVISION NUMBER)
	SYMBOL INDICATES MODIFICATION OR NEW WORK
	SYMBOL INDICATES NOTE DEMOLITION/ REMOVAL WORK

ABBREVIATIONS:	
AFF	- ABOVE FINISHED FLOOR
C/W	- COMPLETE WITH
OED	- OPEN ENDED DUCT

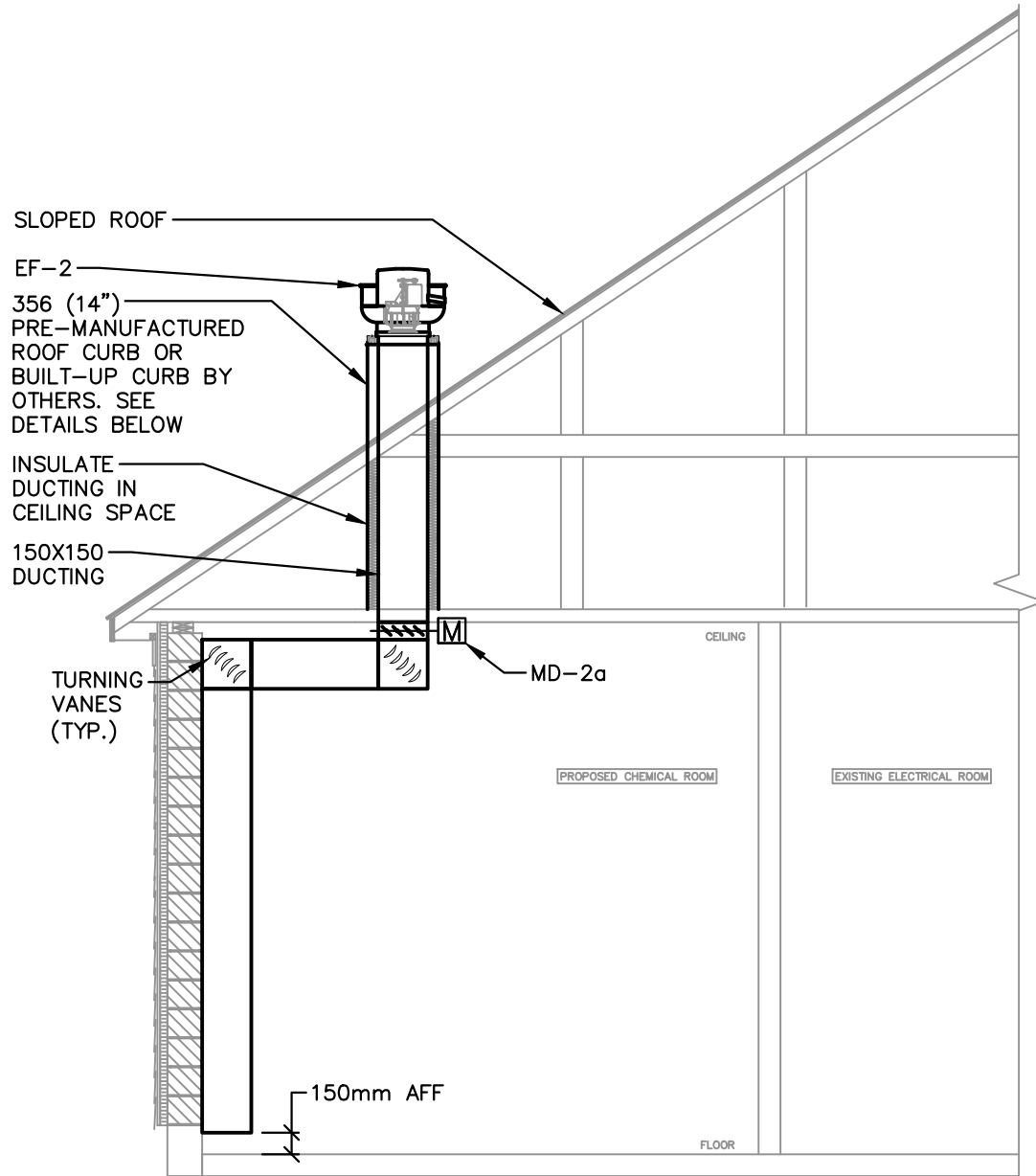
### 1 EXISTING ELECTRICAL ROOM EXHAUST FAN DETAIL (EF-1)

SCALE: NTS



### 2 PROPOSED CHEMICAL ROOM EXHAUST FAN DETAIL (EF-2)

SCALE: NTS



#### DISCLAIMER AND COPYRIGHT

CONTRACTOR MUST VERIFY ALL DIMENSIONS AND BE RESPONSIBLE FOR SAME. ANY DISCREPANCIES MUST BE REPORTED TO THE ENGINEER BEFORE COMMENCING WORK. DRAWINGS ARE NOT TO BE SCALED.

TATHAM ENGINEERING LIMITED CLAIMS COPYRIGHT TO THIS DRAWING WHICH MAY NOT BE USED FOR ANY PURPOSE OTHER THAN THAT PROVIDED IN THE CONTRACT BETWEEN THE OWNER/CLIENT AND THE ENGINEER WITHOUT THE EXPRESS CONSENT OF TATHAM ENGINEERING LIMITED.



No.	DATE	ISSUE/REVISION	No.	DATE	ISSUE/REVISION
1.	07-18-2025	ISSUED FOR REVIEW			
2.	08-28-2025	ISSUED FOR TENDER			

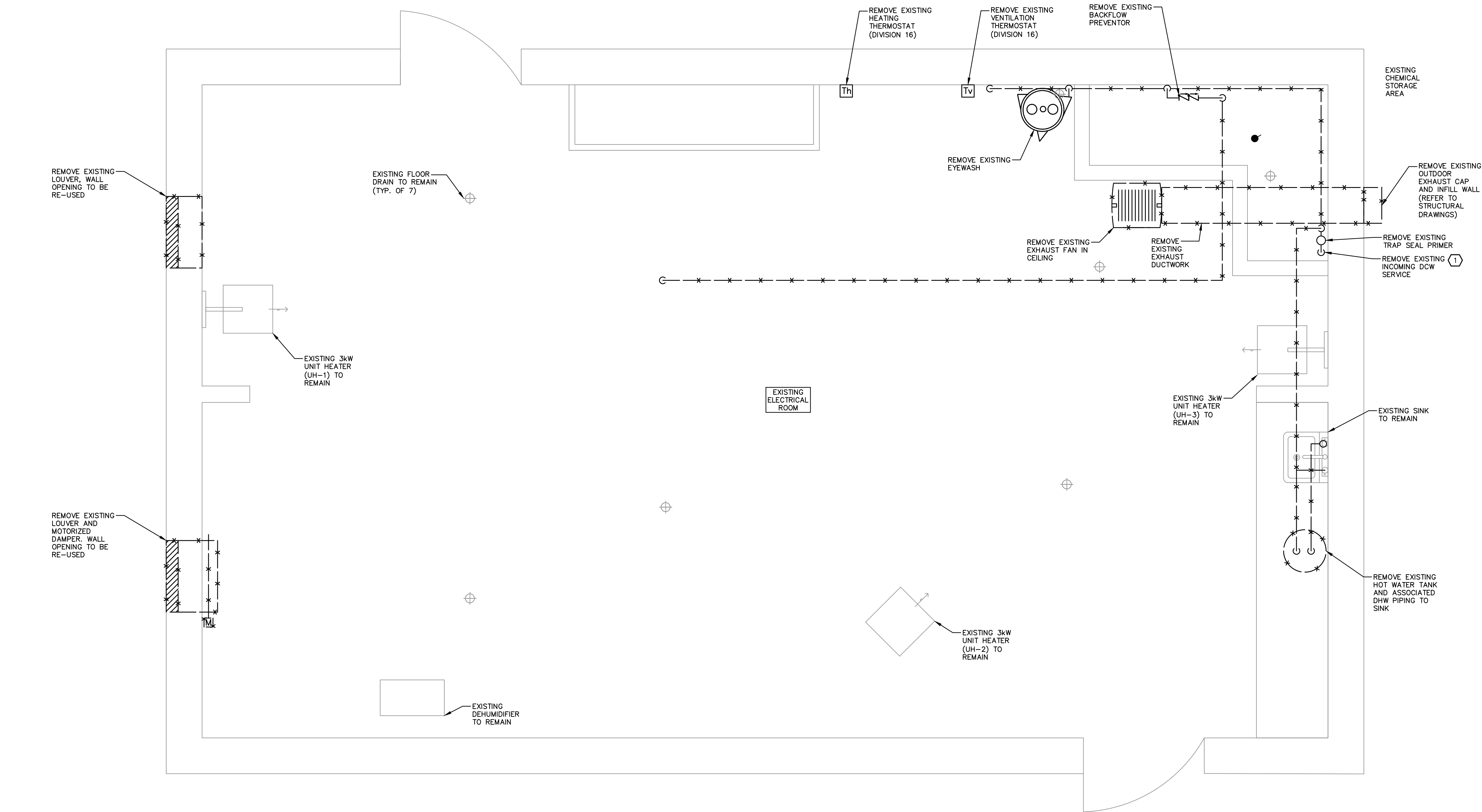
CLIENT	TOWN OF SHELburnE
PROJECT	WELL #1 PUMPHOUSE EXPANSION
DRAWING TITLE	MECHANICAL SCHEDULES, LEGEND, AND DETAILS

S. BURNETT & ASSOCIATES LIMITED		S. BURNETT & ASSOCIATES LIMITED	
ENGINEERING AND ENVIRONMENTAL SERVICES		ENGINEERING AND ENVIRONMENTAL SERVICES	
210 BROADWAY, UNIT 203		210 BROADWAY, UNIT 203	
ORANGEVILLE, ONTARIO L9W 5G4		ORANGEVILLE, ONTARIO L9W 5G4	
TELEPHONE: 519-941-2949 FAX: 519-941-2036		TELEPHONE: 519-941-2949 FAX: 519-941-2036	
DESIGNED BY	M.C.G	DRAWN BY	M.C.G
VERIFIED BY	J.T	PROJECT No.	16066F-02
SCALE			

M1



REMOVAL NOTES:  
1 REMOVE ALL DOMESTIC COLD WATER PIPING



1 EXISTING BUILDING LAYOUT  
M2 • SCALE: 1:20

**DISCLAIMER AND COPYRIGHT**  
CONTRACTOR MUST VERIFY ALL DIMENSIONS AND BE RESPONSIBLE FOR SAME. ANY DISCREPANCIES MUST BE REPORTED TO THE ENGINEER BEFORE COMMENCING WORK. DRAWINGS ARE NOT TO BE SCALED.  
TATHAM ENGINEERING LIMITED CLAIMS COPYRIGHT TO THIS DRAWING WHICH MAY NOT BE USED FOR ANY PURPOSE OTHER THAN THAT PROVIDED IN THE CONTRACT BETWEEN THE OWNER/CLIENT AND THE ENGINEER WITHOUT THE EXPRESS CONSENT OF TATHAM ENGINEERING LIMITED.



16066F-02



No.	DATE	ISSUE/REVISION	No.	DATE	ISSUE/REVISION
1.	07-18-2025	ISSUED FOR REVIEW			
2.	08-28-2025	ISSUED FOR TENDER			

CLIENT  
TOWN OF SHELBURNE  
PROJECT  
WELL #1 PUMPHOUSE EXPANSION  
DRAWINGS TITLE  
EXISTING BUILDING LAYOUT

**S. BURNETT & ASSOCIATES LIMITED**  
ENGINEERING AND ENVIRONMENTAL SERVICES  
210 BROADWAY, UNIT 203  
ORANGEVILLE, ONTARIO L9W 5G4  
TELEPHONE: 519-941-2949 FAX: 519-941-2036

DESIGNED BY M.C.G.	DRAWN BY M.C.G.	VERIFIED BY J.T.	DRAWING No. <b>M2</b>
SCALE PROJECT No. 16066F-02			

- 1 PROVIDE 12mmØ DCW FOR PROCESS EQUIPMENT
- 2 TRANSITION FROM 300X300 TO 150X150 FLAT ON TOP



M3