

## ADDENDUM No. 2

---

**Date:** May 12, 2026 **Project No:** M25011  
**Project Name:** Request for Proposal: Town of Shelburne, Pine Grove Avenue Upgrades and Urbanization  
**To:** All Bidders

This Addendum consists of 5 pages total.

---

Please make the following changes / additions to the Request for Proposal (RFP) Document. Bidders are responsible to ensure that all addenda have been received. Bidders are required to acknowledge addenda in the space provided in Section B of the Form of Proposal.

This addendum will form part of the terms, conditions and specifications outlined in the above noted Request for Proposal Contract Document. All other components of the Bid documents shall remain unchanged.

---

### GENERAL INSTRUCTIONS

1. Bidders are advised that the Closing Date has been extended until:

***Thursday, May 21, 2026 at 2:00 p.m. Eastern Time***

Bidders are required to provide their hard copy submissions within two (2) business days (48 hours) to S. Burnett & Associates Limited's office by Monday, May 25, 2026 before 5:00 p.m. Eastern Time.

The Question Period has not been extended and is now closed.

### CLARIFICATIONS / MODIFICATIONS / DELETIONS

2. Bidders shall REMOVE page 32, Schedule C of the Schedule of Unit Prices, and REPLACE with the attached. (1 page)
3. Bidders shall REMOVE AND REPLACE the following Contract Drawings with the attached: (2 pages)
  - Drawing C2.3: PROPOSED GRADING PLAN SHEET 1
  - Drawing C2.4: PROPOSED GRADING PLAN SHEET 2

The drawings include the revisions listed below. Corresponding changes on other drawing sheets not issued in this addendum will be reflected in the Issued for Construction drawing set.

- a. Revised proposed finished grade elevations within ROW.
  - b. Revised road section design for station 185 to 227 to be superelevated design, with station 160 to 185 being transition area between crowned road and superelevated road.
  - c. Revised structure lids elevations to accommodate revised grades.
  - d. Revised curb and gutter & sidewalk ramp linework to more accurately reflect proposed specification.
  - e. Minor alignment revision to CB and CBMH structures alignments to proposed gutter lines.
  - f. Deleted CB1 structure.
  - g. Deleted 7.6m 300mm diameter storm lead from CB1 to CBMH1.
  - h. Revised AD structures shapes to be more accurate to proposed specification.
  - i. Slight revision to all AD structure alignments and surrounding grading.
  - j. Revised AD1 structure location.
  - k. Revised AD1 structure lead connection. It is now connected to DCB1 structure via a 5.52m of 300mm DIA. PVC SDR 35 storm sewer. It was connected directly to the 450mm DIA. PVC storm sewer via 5.63m of 300mm DIA. PVC SDR 35 storm sewer lead.
4. Bidders shall note the following estimated cut and fill quantities to the proposed road and boulevard subgrade. The cut volume does not include removal of topsoil or removal of existing roadway asphalt (approximately 170 cubic metres in situ asphalt):
- Cut = 1960 cubic metre.
  - Fill = 55 cubic metre.
  - Net = 1905 (Cut) cubic metre.

---

I have read the foregoing Addendum and have considered it in my Proposal.

\_\_\_\_\_  
Bidder's Name

\_\_\_\_\_  
Signature

\_\_\_\_\_  
Date

M25011\_Add#2\_FINAL\_2026-05-12.docx

## SCHEDULE OF UNIT PRICES

**S. Burnett & Associates Limited**

**Project No.** M25011

**Page No.** 32

**Addendum No. 2**

**Contractor:**

**Address:**

**Contract Title:**

Town of Shelburne, Pine Grove Avenue Upgrades and Urbanization

### SCHEDULE C - STORM SEWER & DRAINAGE

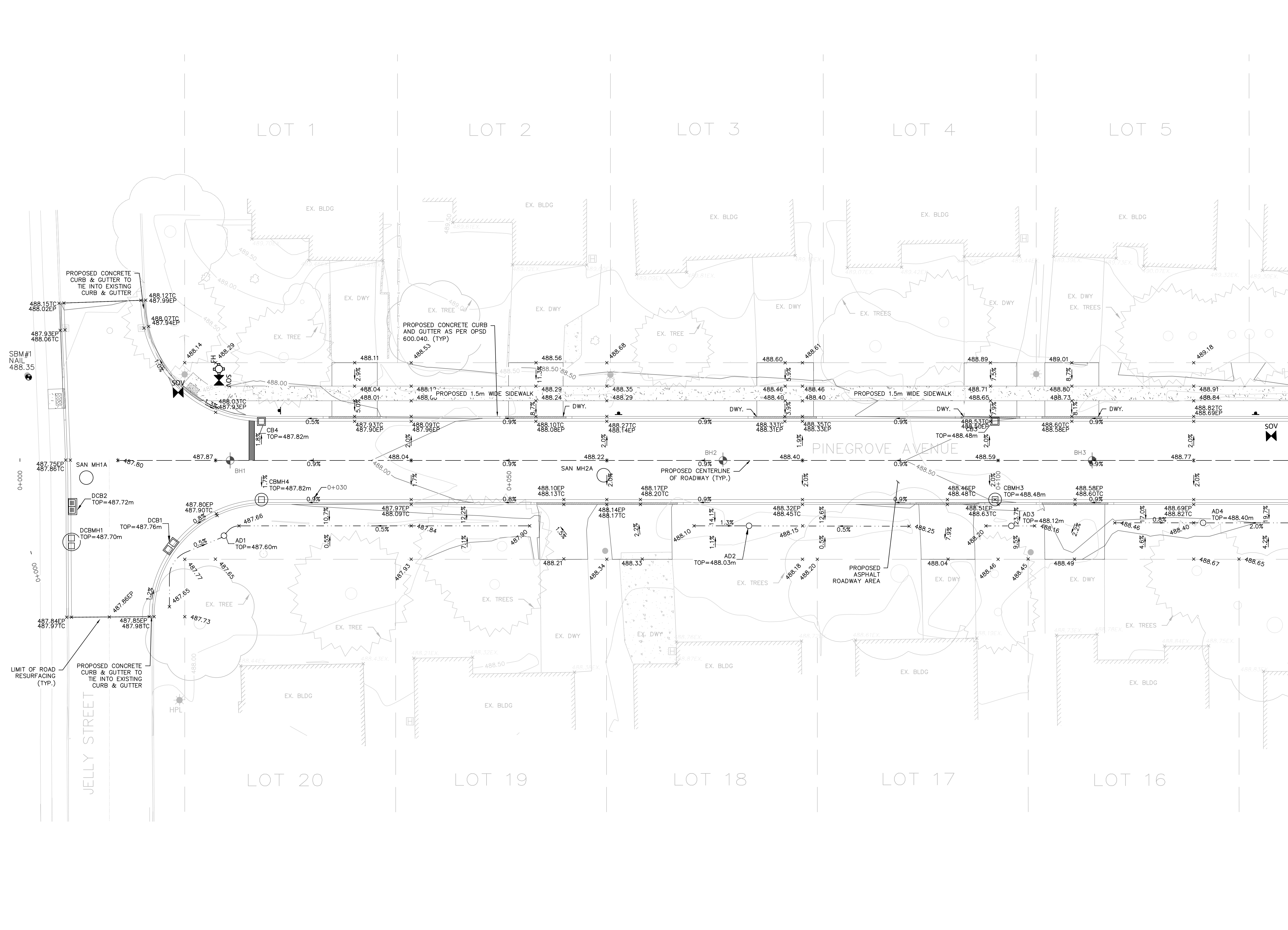
ITEM NO.	DESCRIPTION	CONTRACT QUANTITY	UNIT	UNIT PRICE	CONTRACT TOTAL
C1	Removal of Existing Catchbasins, Sewer, Culverts & Yard Drains	1.00	LS		
<span style="color: orange;">C2</span>	Supply & Place Catchbasin c/w Frame & Grate (OPSD 400.020)	<span style="color: orange;">3.00</span>	Ea.		
C3	Supply & Place Double Catchbasin c/w New Frame & Grate (OPSD 400.020)	1.00	Ea.		
C4	Reset to Grade Double Catchbasin c/w New Frame & Grate (OPSD 400.020)	1.00	Ea.		
C5	Supply & Install 375mm dia. Nyloplast Yard Drain c/w Frame	5.00	Ea.		
C6	Relocate Ex. Catchbasin c/w 300mm dia. Sewer Extension & Fittings	1.00	Ea.		
C7	Supply & Place Catchbasin Maintenance Hole c/w Frame & Grate (OPSD 400.020)				
a)	1200m dia.	4.00	ea.		
b)	1500mm dia. (double catchbasin)	1.00	ea.		
C8	Supply & Place Storm Sewer				
<span style="color: red;">a)</span>	300mm PVC DR35	<span style="color: red;">43.00</span>	m(l)		
b)	375mm PVC DR35	48.00	m(l)		
c)	450mm PVC DR35	150.00	m(l)		
d)	525mm PVC DR35	23.00	m(l)		
C9	Supply & Place 150mm dia. Storm Services PVC DR28 to Property Line c/w Clean Out	20.00	Ea.		
C10	Break out & Reconnect 525mm dia. Sewer to Existing Maintenance Hole	1.00	LS		
C11	Supply & Place 50mm Thick HI-40 Rigid Board Insulation (600mm width)	117.00	m(l)		
C12	Storm Sewer Testing				
a)	CCTV Video	2.00	Ea.		
b)	Deflection Testing (Mandrel)	1.00	Ea.		
<b>SUBTOTAL:</b>					

LEGEND:



- PROPOSED (AS SPECIFIED)
- - - EXISTING (AS SPECIFIED)
- - - - - PROPERTY LINE
- x - x - FENCE (AS SPECIFIED)
- - - - - CENTERLINE (AS SPECIFIED)
- - - - - TREE LINE
- TREE (STAND ALONE)
- WATERMAIN
- CS DOUBLE WATER SERVICE WITH CURBSTOP
- CS SINGLE WATER SERVICE WITH CURBSTOP
- FH FIRE HYDRANT
- SHUT OFF VALVE & BOX
- GRAVITY SANITARY SEWER
- CO SINGLE SANITARY SERVICE WITH CLEAN OUT
- CO DOUBLE SANITARY SERVICE WITH CLEAN OUT
- CO SINGLE STORM SERVICE WITH CLEAN OUT
- MH SANITARY MAINTENANCE HOLE / STORM MAINTENANCE HOLE
- DCBMH DOUBLE CATCHBASIN MAINTENANCE HOLE
- CBMH CATCHBASIN MAINTENANCE HOLE
- DCB GRAVITY STORM SEWER
- CB DOUBLE INLET CATCH BASIN
- CATCH BASIN
- CULVERT/BURIED TANK (AS SPECIFIED)
- - - - - CENTERLINE OF DITCH/SWALE
- OHP/LS HYDRO POLE/LIGHT STANDARD
- BOL BOLLARD
- BH BOREHOLE
- 456.53 SPOT ELEVATION
- 2.0% SLOPE PERCENTAGE
- TOP OF BANK
- BOTTOM OF BANK
- BENCHMARK
- PROPOSED BUILDING EDGE
- DETAIL CALLOUT, DETAIL NUMBER
- DETAIL CALLOUT, DRAWING NUMBER
- SIGN
- Ro+1 STOP SIGN
- STREET SIGN
- PROPOSED TACTILE PLATE
- CHAIN LINK FENCE
- STORM SEWER INSULATION
- DROPPED CURB

- NOTE:
1. PROPOSED PIPES TO BE C/W 600mm WIDE X 50mm THICK RIGID SM INSULATION WHERE MINIMUM COVER DEPTH CANNOT BE ACHIEVED. CONTRACTOR TO MAINTAIN MINIMUM VERTICAL 500mm CLEARANCE BETWEEN PROPOSED PIPES' OUTER DIAMETERS.
  2. CONTRACTOR SHALL ENSURE ALL NECESSARY EROSION AND SEDIMENTATION CONTROL STEPS ARE PROVIDED TO PREVENT TRANSPORTATION OF SOIL INTO PROPOSED CATCHBASINS FOLLOWING ANY EARTH DISTURBANCES OR EXCAVATION.
  3. EXISTING STORM AND SANITARY SEWER CONNECTION ELEVATIONS WILL BE CHECKED & CLARIFIED BY THE CONTRACTOR AND COORDINATED WITH THE ENGINEER BEFORE STARTING CONSTRUCTION.



MATCH LINE REFER TO DRAWING C2.4

M:\BURNETT\PROJECTS\2025\202501 - SHELBURNE PINEGROVE RECONSTRUCTION\DRAWINGS\3. SHEA.CAD & PDS\DWG\C2.3 - 6/2025.DWG, S.P. C2.3 - 2025, V. 2025-05-12.DWG

1. THIS DRAWING IS THE EXCLUSIVE PROPERTY OF S. BURNETT & ASSOCIATES LIMITED AND THE REPRODUCTION OF ANY PART WITHOUT PRIOR WRITTEN CONSENT OF THIS OFFICE IS STRICTLY PROHIBITED.

2. THE CONTRACTOR SHALL VERIFY ALL DIMENSIONS, LEVELS AND DATUMS ON-SITE AND REPORT ANY DISCREPANCIES OR OMISSIONS TO THIS OFFICE PRIOR TO CONSTRUCTION.

3. THIS DRAWING IS TO BE READ AND UNDERSTOOD IN CONJUNCTION WITH ALL OTHER PLANS AND DOCUMENTS APPLICABLE TO THIS PROJECT.

4. DO NOT SCALE THE DRAWINGS.

SITE BENCHMARK #1: NAIL ON HYDRO POLE AT THE INTERSECTION OF GORDON AVENUE AND ANDERSON AVENUE, HAVING AN ELEVATION OF 465.21 METRES.

SITE BENCHMARK #2: NAIL ON HYDRO POLE ALONG GORDON AVENUE APPROX. 70m SOUTH EAST FROM SOUTH WEST CORNER OF THE SUBJECT PROPERTY, HAVING AN ELEVATION OF 465.76 METRES.

No.	DATE	ISSUE/REVISION	No.	DATE	ISSUE/REVISION
1.	03-FEB-2026	ISSUED FOR 66% REVIEW			
2.	09-APR-2026	ISSUED FOR RFP			
3.	12-MAY-2026	ISSUED FOR ADDENDUM No. 2			

CLIENT: TOWN OF SHELBURNE

PROJECT: PINE GROVE AVENUE RECONSTRUCTION & URBANIZATION

DRAWING TITLE: PROPOSED GRADING PLAN SHEET 1

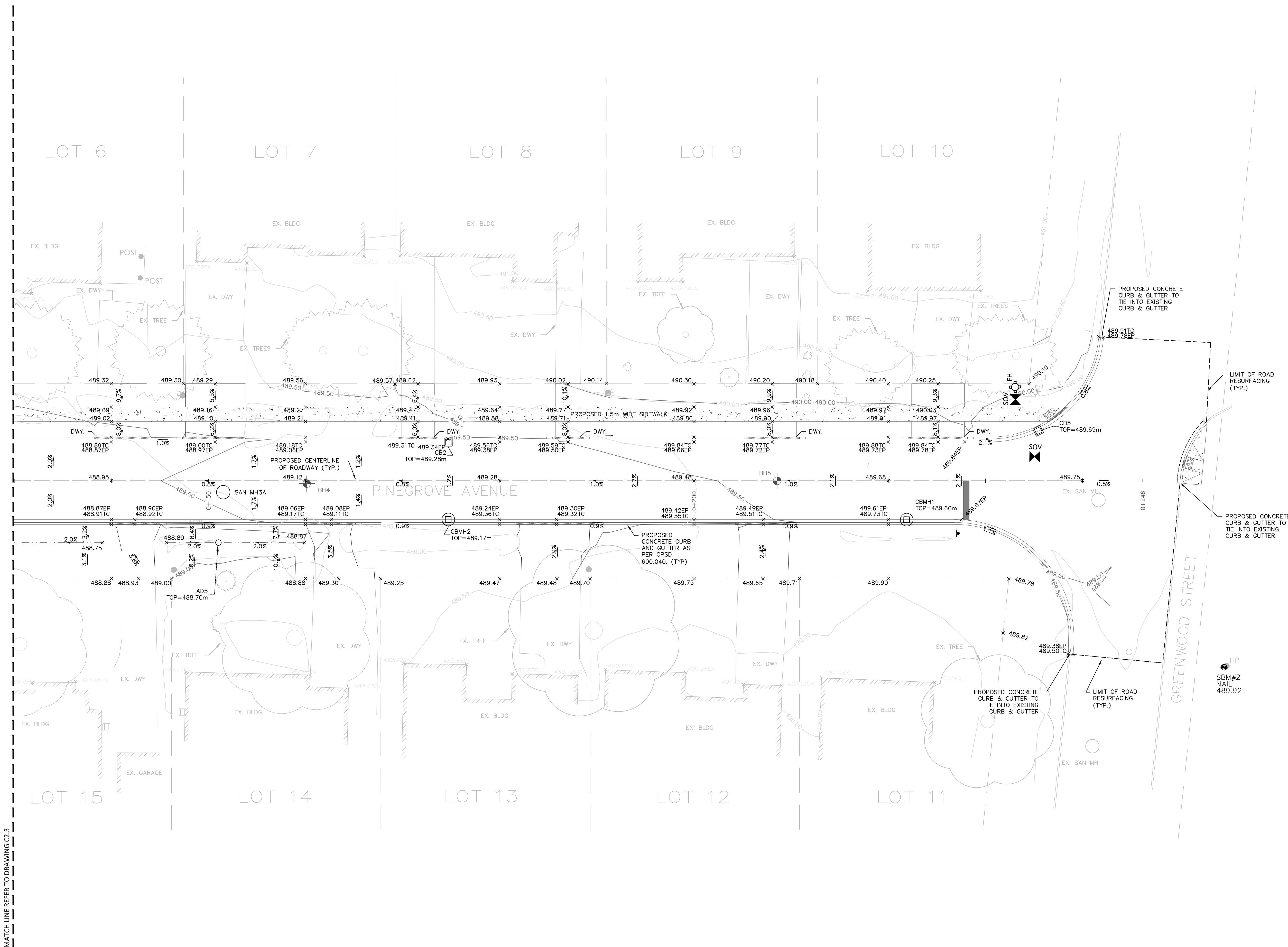
<b>S. BURNETT &amp; ASSOCIATES LIMITED</b> ENGINEERING AND ENVIRONMENTAL SERVICES 210 BROADWAY, UNIT 203 ORANGEVILLE, ONTARIO L9W 5G4 TELEPHONE: 519-941-2949 FAX: 519-941-2036		<b>C2.3</b>
DESIGNED BY: B.A. SCALE: 1:200	DRAWN BY: A.P. PROJECT No.: M25011	

LEGEND:



- PROPOSED (AS SPECIFIED)
- - - EXISTING (AS SPECIFIED)
- - - PROPERTY LINE
- x - x - FENCE (AS SPECIFIED)
- - - CENTERLINE (AS SPECIFIED)
- - - TREE LINE
- TREE (STAND ALONE)
- w - WATERMAIN
- CS CS DOUBLE WATER SERVICE WITH CURBSTOP
- CS CS SINGLE WATER SERVICE WITH CURBSTOP
- ⊕ FIRE HYDRANT
- ⊕ SHUT OFF VALVE & BOX
- CO — GRAVITY SANITARY SEWER
- CO — SINGLE SANITARY SERVICE WITH CLEAN OUT
- CO — DOUBLE SANITARY SERVICE WITH CLEAN OUT
- CO — SINGLE STORM SERVICE WITH CLEAN OUT
- MH SANITARY MAINTENANCE HOLE / STORM MAINTENANCE HOLE
- ⊕ DCBMH DOUBLE CATCHBASIN MAINTENANCE HOLE
- ⊕ CBMH CATCHBASIN MAINTENANCE HOLE
- DCB GRAVITY STORM SEWER
- CB DOUBLE INLET CATCH BASIN
- CATCH BASIN
- - - CULVERT/BURIED TANK (AS SPECIFIED)
- - - CENTERLINE OF DITCH/SWALE
- OHP/LS HYDRO POLE/LIGHT STANDARD
- BOL BOLLARD
- BH BOREHOLE
- 456.53 SPOT ELEVATION
- 2.0% SLOPE PERCENTAGE
- TOP OF BANK
- BOTTOM OF BANK
- ⊕ BENCHMARK
- ⊕ PROPOSED BUILDING EDGE
- ⊕ DETAIL CALLOUT, DETAIL NUMBER
- ⊕ DETAIL CALLOUT, DRAWING NUMBER
- ⊕ SIGN
- ⊕ Ro-1 STOP SIGN
- ⊕ STREET SIGN
- ▨ PROPOSED TACTILE PLATE
- ▨ CHAIN LINK FENCE
- ▨ STORM SEWER INSULATION
- ▨ DROPPED CURB

- NOTE:
1. PROPOSED PIPES TO BE C/W 600mm WIDE X 50mm THICK RIGID SM INSULATION WHERE MINIMUM COVER DEPTH CANNOT BE ACHIEVED. CONTRACTOR TO MAINTAIN MINIMUM VERTICAL 500mm CLEARANCE BETWEEN PROPOSED PIPES' OUTER DIAMETERS.
  2. CONTRACTOR SHALL ENSURE ALL NECESSARY EROSION AND SEDIMENTATION CONTROL STEPS ARE PROVIDED TO PREVENT TRANSPORTATION OF SOIL INTO PROPOSED CATCHBASINS FOLLOWING ANY EARTH DISTURBANCES OR EXCAVATION.
  3. EXISTING STORM AND SANITARY SEWER CONNECTION ELEVATIONS WILL BE CHECKED & CLARIFIED BY THE CONTRACTOR AND COORDINATED WITH THE ENGINEER BEFORE STARTING CONSTRUCTION.



MATCH LINE REFER TO DRAWING C2.3

M:\BURNETT\PROJECTS\2025\20250101 - SHELBURNE PINEGROVE RECONSTRUCTION\DRAWINGS\3. SHEA.CAD & PLOTTING\C2.3.3 - 6/25/2025 11:30 AM, C:\Users\j... \AppData\Local\Temp\20250101\_11300512.DWG

1. THIS DRAWING IS THE EXCLUSIVE PROPERTY OF S. BURNETT & ASSOCIATES LIMITED AND THE REPRODUCTION OF ANY PART WITHOUT PRIOR WRITTEN CONSENT OF THIS OFFICE IS STRICTLY PROHIBITED.

2. THE CONTRACTOR SHALL VERIFY ALL DIMENSIONS, LEVELS AND DATUMS ON-SITE AND REPORT ANY DISCREPANCIES OR OMISSIONS TO THIS OFFICE PRIOR TO CONSTRUCTION.

3. THIS DRAWING IS TO BE READ AND UNDERSTOOD IN CONJUNCTION WITH ALL OTHER PLANS AND DOCUMENTS APPLICABLE TO THIS PROJECT.

4. DO NOT SCALE THE DRAWINGS.

SITE BENCHMARK #1: NAIL ON HYDRO POLE AT THE INTERSECTION OF GORDON AVENUE AND ANDERSON AVENUE, HAVING AN ELEVATION OF 465.21 METRES.

SITE BENCHMARK #2: NAIL ON HYDRO POLE ALONG GORDON AVENUE APPROX. 70m SOUTH EAST FROM SOUTH WEST CORNER OF THE SUBJECT PROPERTY, HAVING AN ELEVATION OF 465.76 METRES.

No.	DATE	ISSUE/REVISION	No.	DATE	ISSUE/REVISION
1.	03-FEB-2026	ISSUED FOR 66% REVIEW			
2.	09-APR-2026	ISSUED FOR RFP			
3.	12-MAY-2026	ISSUED FOR ADDENDUM No. 2			

CLIENT: TOWN OF SHELBURNE

PROJECT: PINE GROVE AVENUE RECONSTRUCTION & URBANIZATION

DRAWING TITLE: PROPOSED GRADING PLAN SHEET 2

		S. BURNETT & ASSOCIATES LIMITED ENGINEERING AND ENVIRONMENTAL SERVICES 210 BROADWAY, UNIT 203 ORANGEVILLE, ONTARIO L9W 5G4 ENGINEERING & ENVIRONMENTAL TELEPHONE: 519-941-2949 FAX: 519-941-2036	
DESIGNED BY: B.A.	DRAWN BY: A.P.	VERIFIED BY: S.B.	DRAWING No.:
SCALE: 1:200		PROJECT No. M25011	
			C2.4