

Shelburne Economic Development



FYI

BUSINESS NEWS UPDATE

Spring



SHELBURNE, DUFFERIN & AREA JOB FAIR

APRIL 23 | 1:00 - 5:00 PM

CENTRE DUFFERIN RECREATION COMPLEX
200 Fiddle Park Lane, Shelburne ON

Sponsored by: **EmployNext**
powered by SERCO

Community Partners:



Grow to Give invites community gardeners across Dufferin County to help support local families experiencing food insecurity - **one plant at a time**. Whether you grow in a backyard, community plot, or balcony container, every contribution matters.

Participants can request a limited selection of **free** seeds and are encouraged to grow as much or as little as their space and schedule allow.

Available seeds include:

- Red bush beans

- Ginger
- Scotch bonnet peppers
- Buttercup heritage squash

**While supplies last.*

Throughout the growing season, we will collect donated harvests, which are then processed and distributed through local food security programs across Dufferin County.

This ensures fresh, locally grown produce reaches families and community organizations that need it most.

There is no minimum requirement – simply, grow what you can, and we'll take care of getting it where it's needed.

Interested gardeners are asked to complete a short Grow to Give Seed Selection Form to help with fair seed distribution.

Grow 2 Give Seed Form

Commercial Façade Improvement Grant Program



Get up to \$13,500 to enhance your building's appearance!

What's Covered:

- Exterior lighting & decorative details
- Exterior Professional painting & signage
- Patio installations
- Design services

Benefits:

- Attract more customers
- Increase property value
- Support downtown revitalization

Requirements:

- Downtown BIA location

- Heritage-appropriate design
- Complete by December 31, 2026

Grant funding is subject to availability, and the program may close without notice once funds are depleted. For more information, visit our website.

[More Info](#)

Business Supports



Mastercard Small Business Fund

Calling all female small business owners! Applications for the Mastercard Small Business Fund are now open. Now in its fourth year, this initiative is part of Mastercard's ongoing support of the small business community in Canada and is designed to support female entrepreneurs by offering ten grants of \$10,000 CAD each, along with tailored mentorship and access to business growth resources.

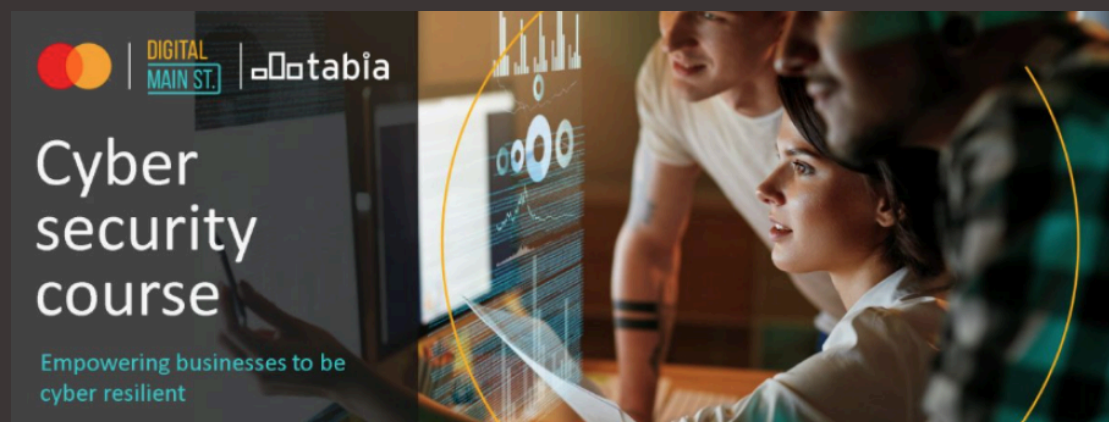
[Learn More](#)



Stand out on Google with a free Business Profile

Turn people who find you on Google Search and Maps into new customers with a free Business Profile for your storefront or service area. Personalize your profile with photos, offers, posts, and more.

[Start Now](#)



Empower Your Small Business to be Cyber Resilient

Recognizing the urgent need to fortify small businesses against cybercrime, Mastercard has launched an on-demand FREE cybersecurity course designed for entrepreneurs looking to futureproof their small business. This course, presented by Mastercard, is designed to empower small businesses with the tools and knowledge they need to fortify their operations against the growing threat of cybercrime.

Enroll Now

WELCOME New Businesses



Evergreen Therapy Services

FireHouse Subs

Golden Tree Cannabis

Osmows

Pelican Tap + Grill

The Labyrinth Alcove Counselling & Psychotherapy

Watts Graphics

Town of Shelburne Economic Development

519-215-2852

203 Main Street East

Shelburne, Ontario L9V3K7

ed@shelburne.ca or click the link below

[Email: Questions or Information](#)

See what's happening on our social sites:



Town of Shelburne | 203 Main Street East | Shelburne , ON L9v 3K7 CA

[Unsubscribe](#) | [Update Profile](#) | [Our Privacy Policy](#) | [Constant Contact Data Notice](#)



Try email marketing for free today!