

NOTE: A walking speed of 1.38 meters per second was used to calculate the walk time. All walk times are only approximate and will differ based on individual pace and parking location.

Municipal Parking Lot A (William Street)

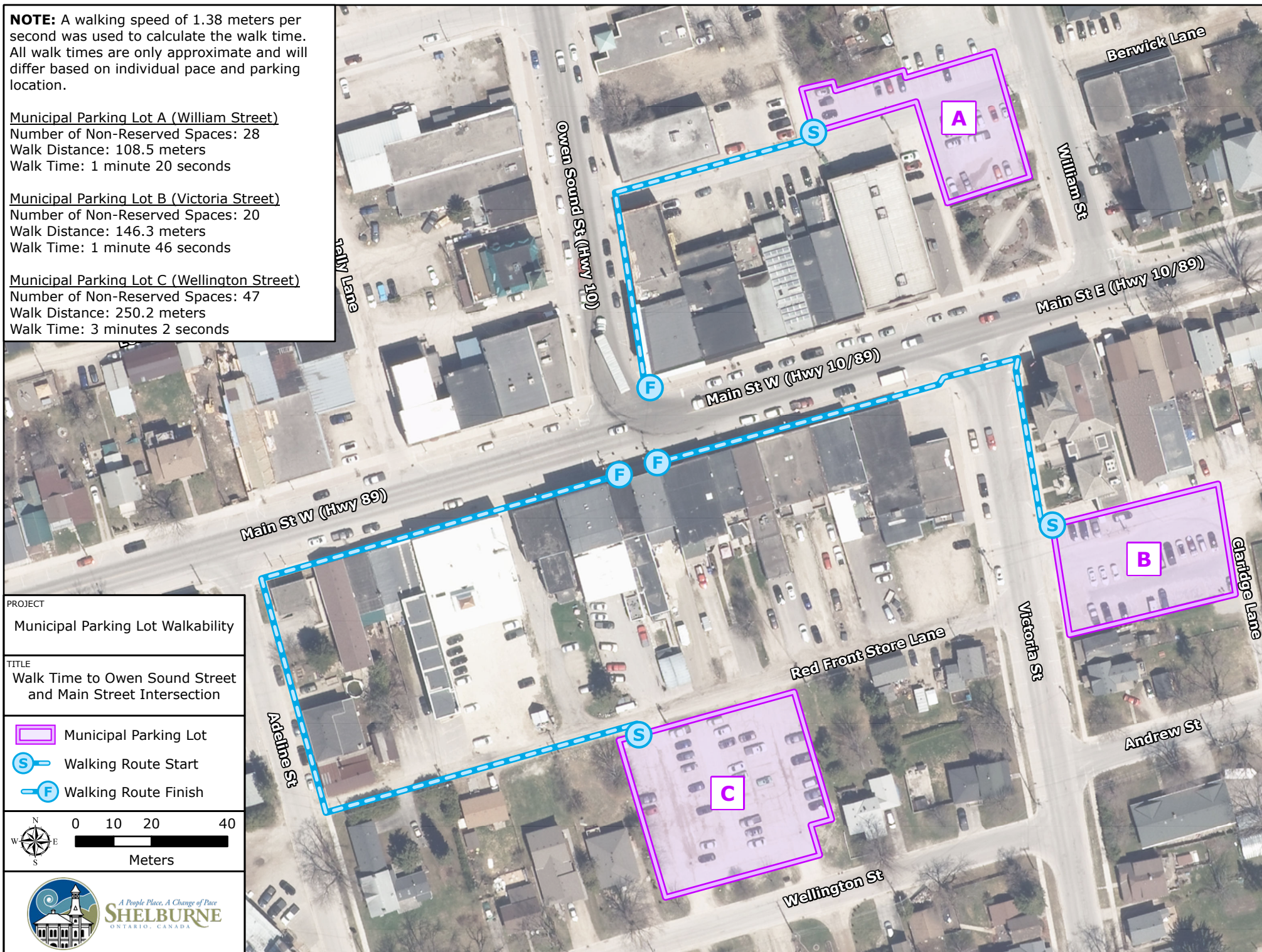
Number of Non-Reserved Spaces: 28
Walk Distance: 108.5 meters
Walk Time: 1 minute 20 seconds

Municipal Parking Lot B (Victoria Street)

Number of Non-Reserved Spaces: 20
Walk Distance: 146.3 meters
Walk Time: 1 minute 46 seconds

Municipal Parking Lot C (Wellington Street)

Number of Non-Reserved Spaces: 47
Walk Distance: 250.2 meters
Walk Time: 3 minutes 2 seconds



PROJECT

Municipal Parking Lot Walkability

TITLE

Walk Time to Owen Sound Street
and Main Street Intersection



Municipal Parking Lot



Walking Route Start



Walking Route Finish



0 10 20 40

Meters



A People Place, A Change of Pace
SHELBURNE
ONTARIO, CANADA

NOTE: A walking speed of 1.38 meters per second was used to calculate the walk time. All walk times are only approximate and will differ based on individual pace and parking location.

Municipal Parking Lot A (William Street)

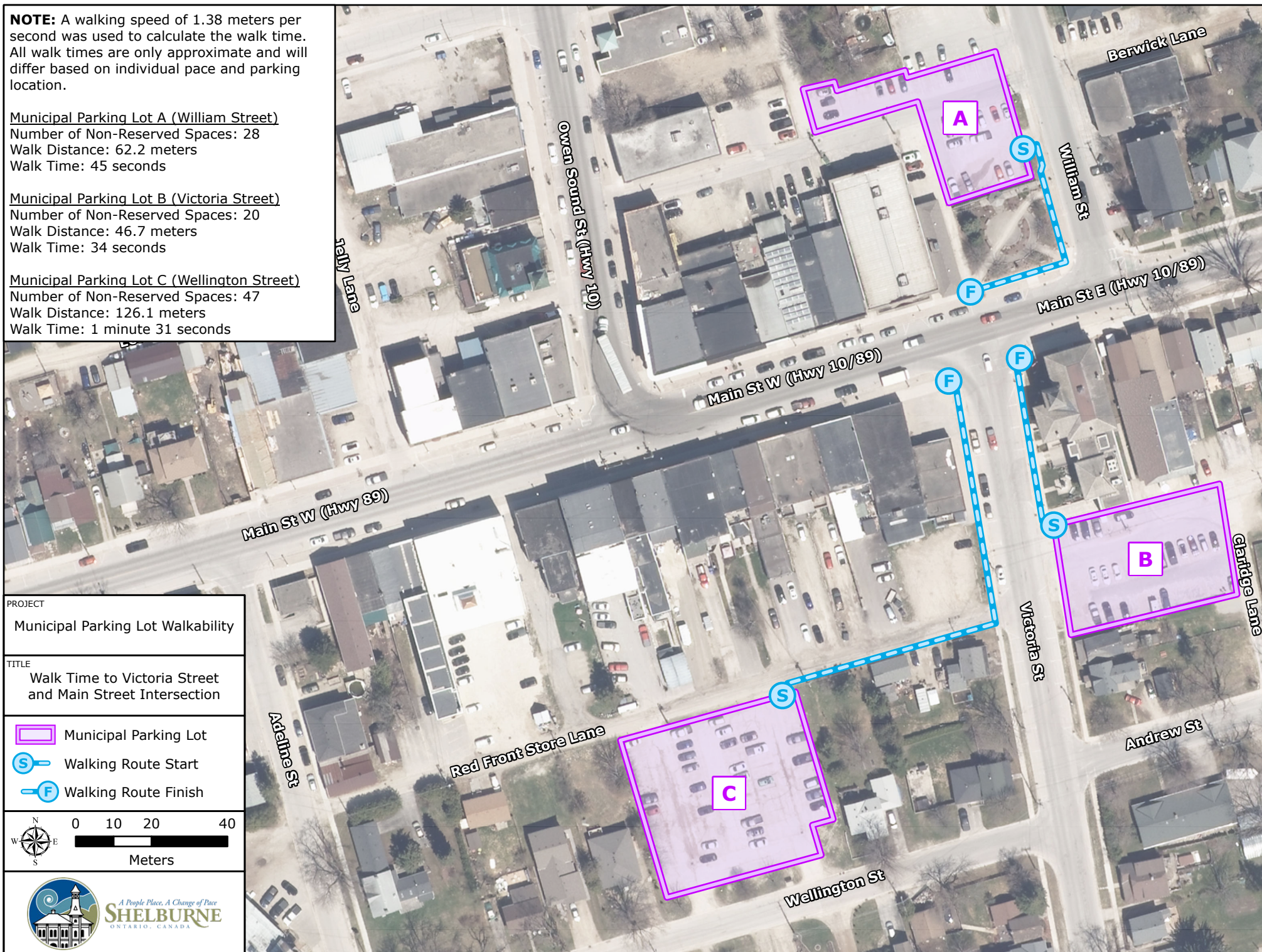
Number of Non-Reserved Spaces: 28
Walk Distance: 62.2 meters
Walk Time: 45 seconds

Municipal Parking Lot B (Victoria Street)

Number of Non-Reserved Spaces: 20
Walk Distance: 46.7 meters
Walk Time: 34 seconds

Municipal Parking Lot C (Wellington Street)

Number of Non-Reserved Spaces: 47
Walk Distance: 126.1 meters
Walk Time: 1 minute 31 seconds



PROJECT


Municipal Parking Lot Walkability

TITLE

Walk Time to Victoria Street
and Main Street Intersection

 Municipal Parking Lot

 Walking Route Start

 Walking Route Finish

