

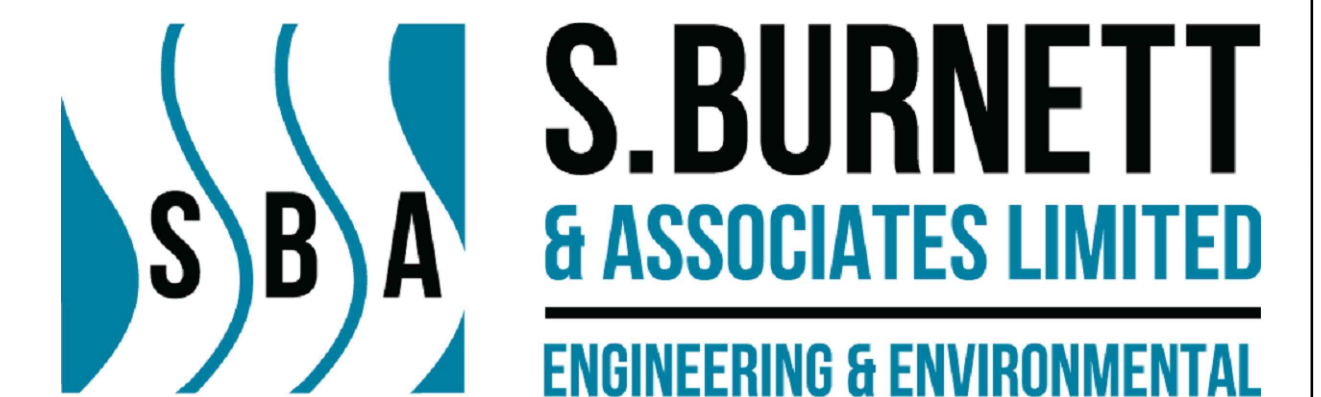
TOWN OF SHELBURNE PINE GROVE AVENUE RECONSTRUCTION & URBANIZATION



PREPARED FOR:

TOWN OF SHELBURNE
203 MAIN ST. E.,
SHELBURNE ON.,
L9V 3K7

PROJECT No. M25011



S. BURNETT & ASSOCIATES LTD.
ENGINEERING AND ENVIRONMENTAL SERVICES
210 BROADWAY, UNIT 203
ORANGEVILLE, ON
L9W 5G4
T: 519-941-2949
F: 519-941-2036
www.sbaengineering.com

INDEX

COVER PAGE	
CO.1	DRAWING INDEX & GENERAL NOTES
C1.1	KEY PLAN
C1.2	EXISTING SITE PLAN & REMOVALS
C1.3	PROPOSED EROSION & SEDIMENT CONTROL PLAN
C1.4	PROPOSED SITE PLAN SHEET 1
C1.5	PROPOSED SITE PLAN SHEET 2
C2.1	SERVICING PLAN & PROFILE COURT: STA. 0+000 TO 0+120
C2.2	SERVICING PLAN & PROFILE COURT: STA. 0+120 TO 0+245
C2.3	PROPOSED GRADING PLAN SHEET 1
C2.4	PROPOSED GRADING PLAN SHEET 2
C5.1	STANDARD DETAILS
C5.2	STANDARD DETAILS
C5.3	STANDARD DETAILS

NOTES

GENERAL NOTES

- ALL BENCHMARKS, UTILITIES, SIZES, MATERIALS AND SERVICE LOCATIONS TO BE VERIFIED BY CONTRACTOR PRIOR TO COMMENCEMENT OF WORK, AND ANY DAMAGE TO SUCH BE REPAIRED AT THE CONTRACTOR'S COST AND ANY COMPENSATION TO THE UTILITY OWNERS TO BE PAID BY THE CONTRACTORS.
- ALL ELEVATIONS AND DIMENSIONS ARE IN METRIC UNITS UNLESS OTHERWISE INDICATED.
- ALL WORK TO CONFORM TO TOWN OF SHELBURNE STANDARDS AND ONTARIO PROVINCIAL STANDARD DRAWINGS AND SPECIFICATIONS (OPSD AND OPSS) IT IS THE RESPONSIBILITY OF THE CONTRACTOR TO INFORM THEMSELVES OF THE EXACT LOCATION OF, AND ASSUME ALL LIABILITY FOR DAMAGE TO, ALL UTILITIES, SERVICES AND STRUCTURES WHETHER ABOVE GROUND OR BELOW GRADE BEFORE COMMENCING THE WORK. SUCH INFORMATION IS NOT NECESSARILY SHOWN ON THE DRAWINGS, AND WHERE SHOWN, THE ACCURACY CAN NOT BE GUARANTEED.
- ALL DIMENSIONS AND ALL INFORMATION SHALL BE CHECKED AND VERIFIED ON THE JOB AND ANY DISCREPANCIES MUST BE REPORTED TO THE ENGINEER BEFORE COMMENCING THE WORK.
- CONTRACTOR TO OBSERVE ALL LOCAL ZONING BY-LAW, ONTARIO BUILDING CODE AND ALL OTHER APPLICABLE LAWS DURING THE COURSE OF CONSTRUCTION.
- CONTRACTOR TO OBTAIN ALL THE NECESSARY PERMITS FOR COMPLETION OF WORK.

CONSTRUCTION NOTES:

- CONSTRUCTION EQUIPMENT AND MATERIALS TO BE STORED IN DESIGNATED LAYDOWN AREAS OR ALONG APPROVED ROADWAY BOULEVARD AREAS.
- ROAD TO BE CLEANED AND SWEEP UP AS REQUESTED BY ENGINEER.
- TRAFFIC CONTROL (AS PER MTO TRAFFIC CODE BOOK) TO BE MANAGED BY CONTRACTOR DURING COURSE OF CONSTRUCTION.
- PEDESTRIAN WALKWAYS AND DRIVEWAYS TO BE MAINTAINED AT ALL TIMES DURING THE PROJECT TO ENSURE RESIDENTS SAFE ACCESS TO THEIR PROPERTIES.
- TREE PROTECTION ZONES SHALL BE ESTABLISHED PRIOR TO THE COMMENCEMENT OF ANY GRADING WORK.

EARTHWORKS AND GRADING:

- STRIP EXISTING TOPSOIL AND EXCAVATE TO SUBGRADE FOR STRUCTURES, FOR PAVEMENT AND GRANULAR SURFACE, AND TRENCHING FOR SERVICES. DISPOSE OF EXCESS MATERIAL OFFSITE AT CONTRACTORS EXPENSE.
- PROOF ROLL AND CONFIRM COMPACTION AND ACCEPTABILITY OF SUBGRADE PRIOR TO BACKFILL OR CONSTRUCTION COMPACTION. TO BE VERIFIED BY GEOTECHNICAL ENGINEER.
- ALL WORK DONE IN THE ROAD RIGHT-OF-WAY SHALL BE IN ACCORDANCE WITH O.P.S.S. AND CONTRACT SPECIFICATIONS.
- PROPOSED GRADES AT THE PROPERTY LINE MUST MATCH EXISTING.
- MAINTAIN POSITIVE DRAINAGE AT ALL TIMES.
- NO RECYCLED MATERIAL TO BE USED IN ASPHALT PAVEMENT OR GRANULAR MATERIALS, UNLESS APPROVED BY THE ENGINEER.

ROADWAY AND BOULEVARD:

- STREETS AND ROADWAYS DISTURBED DURING CONSTRUCTION SHALL BE REPAIRED TO MEET OR EXCEED CURRENT CONDITION. ASPHALT ROAD MINIMUM REPAIR SHALL BE 450mm GRANULAR B, 150mm GRANULAR A, 60mm HL#4 AND 40mm HL#3.
- ROADWAY CUTS SHALL BE COMPLETED WITH STRAIGHT LINE SAW CUTS PRIOR TO ASPHALT REMOVAL.
- BOULEVARD AREAS TO BE REINSTATED WITH A MINIMUM 150mm TOPSOIL AND SODDED.
- CONTRACTOR IS RESPONSIBLE FOR ENSURING THAT VEGETATION TAKES HOLD INCLUDING WATERING ETC.
- CONTRACTOR TO APPLY TACK COAT MATERIAL AS PER OPSS 310.05.02 FOR ALL PAVED AREAS.

EROSION AND SEDIMENT ESC CONTROL:

ESC GENERAL NOTES

- ALL SEDIMENT AND EROSION CONTROL FACILITIES AND WORKS ARE TO BE CONSTRUCTED AND IN PLACE TO THE APPROVAL OF THE SITE ENGINEER PRIOR TO ANY GRADING OPERATIONS COMMENCING. TYPICAL WORKS INCLUDE SILT FENCES, INTERCEPTOR SWALES, AND STRAW BALE CHECK DAMS.
- ALL TEMPORARY TOPSOIL STOCKPILES ARE TO BE PROVIDED WITH THE NECESSARY SEDIMENT AND EROSION CONTROL FEATURES AND PLACED MORE THAN 3M AWAY FROM ANY PROPERTY LINE, WATERCOURSE OR DITCH. IF STOCKPILES ARE TO REMAIN FOR A PERIOD LONGER THAN 30 DAYS, STOCKPILES SHALL BE HYDROSEEDDED AND SURROUNDED WITH SILT FENCE.
- ALL INTERCEPTOR SWALES ARE TO BE SEEDED TO STABILIZE THEIR BANKS IMMEDIATELY FOLLOWING CONSTRUCTION.
- ALL EROSION CONTROL ARE TO BE INSPECTED REGULARLY AND CLEANED OR REPLACED, AS REQUIRED. PERIMETER EROSION CONTROLS ARE TO BE KEPT IN PLACE AND FUNCTIONAL UNTIL THE SITE HAS STABILIZED (LOT GRADING AND SODDING COMPLETE).
- NO ALTERNATIVE EROSION CONTROL METHODS SHALL BE PERMITTED UNLESS APPROVED BY SITE ENGINEER.
- THE CONTRACTOR IS RESPONSIBLE FOR ALL STEET CLEANING ALONG ALL ACCESS AND HAUL ROADS.
- ALL EXISTING DRAINAGE STRUCTURES TO HAVE SEDIMENT TRAPS INSTALLED AND MAINTAINED.

ESC MAINTENANCE AND OPERATIONS OF SEDIMENT CONTROLS

SILT FENCE

- SILT FENCE MUST BE INSPECTED WEEKLY FOR RIPS OR TEARS, BROKEN STAKES, BLOW-OUTS, AND ACCUMULATION OF SEDIMENT.
- SILT FENCE MUST BE INSPECTED FOLLOWING ALL 15MM OR GREATER RAIN EVENT OR AS DIRECTED BY SITE ENGINEER.
- SEDIMENT MUST BE REMOVED FROM SILT FENCE WHEN ACCUMULATION REACHES 50% OF THE HEIGHT OF THE FENCE.
- ALL SILT FENCES MUST BE REMOVED ONLY WHEN THE ENTIRE SITE IS STABILIZED AND AS DIRECTED BY THE SITE ENGINEER.

ESC STRAW BALE FLOW CHECK DAM

- REMOVE ACCUMULATED SEDIMENT UPSTREAM OF THE CHECK DAM IF GREATER THAN ONE HALF OF THE DAM HEIGHT.
- SILT REMOVAL MUST BE UNDERTAKEN WITH CARE TO MINIMIZE DOWNSTREAM SEDIMENTATION IN SWALE OR DITCH.
- STRAW BALE CHECK DAM AND ALL ACCUMULATED SEDIMENT MUST BE REMOVED WITH CARE ONCE THE CONSTRUCTION SITE IS STABILIZED AND AS DIRECTED BY THE SITE ENGINEER.

ESC DECOMMISSIONING

- FOLLOWING COMPLETION OF CONSTRUCTION AND AS DIRECTED BY SITE ENGINEER, ALL EROSION AND SEDIMENT CONTROL WORKS ARE TO BE REMOVED INCLUDING ANY ACCUMULATED SEDIMENT.

WATERMAIN:

- UNLESS OTHERWISE SPECIFIED, CONTRACTOR REFER TO OPSD AND OPSS'S MOST RECENT LIST FOR APPROVED MATERIALS AND PRODUCTS.
- ALL PROPOSED PIPE DIAMETERS SPECIFIED IN DRAWINGS SHALL BE MINIMUM INNER DIAMETER.
- ALL WATERMAIN & WATER SERVICE MATERIALS (E.G. CURB STOPS, MAIN STOPS, SERVICE BOXES, SADDLES, HYDRANTS, ETC.) AND CONSTRUCTION METHODS MUST CORRESPOND TO THE CURRENT ONTARIO PROVINCIAL STANDARDS AND SPECIFICATIONS.
- WRITTEN AUTHORIZATION IS REQUIRED FROM THE ENGINEER PRIOR TO INSTALLATION OF WATER SERVICE. A MINIMUM OF 96 HOURS NOTICE IS TO BE PROVIDED TO THE ENGINEER PRIOR TO THE INSTALLATION OF WATER SERVICE. ENGINEER TO BE PRESENT FOR CONNECTIONS TO EXISTING WATERMANS.
- ALL TESTING SHALL FOLLOW THE MOST CURRENT VERSIONS OF AWWA C651 DISINFECTING WATER MAINS, WATERMAIN DISINFECTION PROCEDURE AUGUST 1, 2020, ONTARIO REGULATION 170/03 AND INCLUDES THE SWABBING, PRESSURE TESTING, DISINFECTION, SAMPLING/TESTING, AND FINAL CONNECTION (LESS THAN 6 METERS IN LENGTH) PROCEDURES DETAIL ARE TO BE PROVIDED TO THE ENGINEER WITH A MINIMUM OF 2 WEEKS IN ADVANCE OF ANY WATERMAIN CONSTRUCTION. ONLY COMMUNITY'S LICENSED OPERATORS SHALL OPERATE VALVES AND FIRE HYDRANTS LOCATED ON THE FIRST NATION WATER SYSTEM.
- WATERMAIN TESTING SHALL NOT COMMENCE UNTIL PLACEMENT OF GRANULAR B HAS BEEN COMPLETED.
- ALL NEW WATERMANS SHALL BE HYDROSTATICALLY TESTED IN ACCORDANCE WITH PROVINCIAL GUIDELINES. THE SYSTEM SHALL BE CONSTRUCTED AND TESTED AS PER OPSS 701.
- WATERMAIN SHALL BE PVC DR18 CLASS 235 AND CONFORMING TO ASTM D1784, AWWA C900 OF C905 AND CAN/CSA B137.3 WITH GASKETED BELL END.
- A 12 GAUGE, 7 STRAND COPPER TRACER WIRE, WITH AN OUTER PLASTIC COATING, SHALL BE ATTACHED TO EVERY NON-METALLIC WATERMAIN, HYDRANT LEAD AND SERVICE CONNECTION.
- SEPARATION DISTANCES BETWEEN SEWERS AND WATERMANS AND SEWER SERVICES AND WATER SERVICES SHALL BE AS PER MECP PROCEDURE F-6-1; IN GENERAL, 2.5m HORIZONTAL SEPARATION BETWEEN PARALLEL INSTALLATIONS AND 0.5 M VERTICAL SEPARATION AT CROSSINGS WHERE THE WATERMAIN OR WATER SERVICE CROSSES UNDER THE SEWER. WHERE THIS SPATIAL SEPARATION CANNOT BE ACHIEVED, OTHER MEASURES ARE TO BE IMPLEMENTED, SUCH AS USE OF PRESSURE PIPE (350kPa) FOR SEWERS, AS TO BE APPROVED BY THE ENGINEER.
- ALL WATERMANS AND SERVICES SHALL HAVE MINIMUM COVER OF 2.0m.
- ALL FITTINGS, VALVES AND HYDRANT LEADS SHALL BE FULLY RESTRAINED AND AT A MINIMUM MEETS STANDARD DETAIL REQUIREMENTS AND MANUFACTURER'S RECOMMENDATIONS.
- CATHODIC PROTECTION SHALL BE INSTALLED AS PER OPSD AND OPSS.

- ALL PROPOSED WATER SERVICE CONNECTIONS TO BE INSTALLED WITH COMPRESSION FITTINGS. CONTRACTOR SHALL NOT USE ANY TAPERED FITTINGS OR GEAR CLAMPS ON PROPOSED OR EXISTING WATER SERVICE LINES.
- CATHODIC CORROSION PROTECTION REQUIRED FOR ALL METAL FITTINGS.
 - 241b ANODE: HYDRANT
 - 121b ANODE: VALVES, BENDS, TEES, ETC
 - MECHANICAL JOINTS: ZINC NUTS
- WATERMAIN/SERVICE MATERIALS TO BE LISTED BELOW.
 - MAINLINE VALVES: MUELLER RESILIENT WEDGE GATE VALVE AWWA C509, A-2362 C/W MECHANICAL JOINT ENDS. VALVE TO OPEN COUNTER CLOCKWISE.
 - VALVE BOXES: BIBBY STE CROIX VB2200 OR STAR PIPE CANADA VB-5006 (SLIDE TYPE STYLE).
 - MECHANICAL RESTRAINERS: ACCEPTABLE MANUFACTURES INCLUDE UNI-FLANGE, STAR PIPE, SIGMA, ROMAC.
 - ANODES: HIGH PURITY ZINC ANODES BY BREN TECHNOLOGIES INC. OR APPROVED EQUIVALENT
- ALL DOUBLE SERVICES TO BE 25mm MUNICIPEX C/W TWO (2) INDIVIDUAL CURBSTOPS AT PROPERTY LINE

SANITARY AND STORM SEWERS

- SANITARY SEWER SHALL BE PVC SDR 35. GRANULAR A BEDDING AND COVER IN ACCORDANCE WITH OPSD 802.010.
- STORM SEWER SHALL BE PVC DR35, HDPE BOSS 2000, OR CONCRETE (REINFORCED) MAY BE USED FOR SEWER PIPES 600 MM DIAMETER AND SMALLER, UNLESS OTHERWISE SPECIFIED. SEWERS 675 MM DIAMETER AND LARGER SHALL BE CONCRETE (REINFORCED) AND CONFORM TO CSA A257.2 (MINIMUM CLASS 50-D), UNLESS OTHERWISE SPECIFIED. GRANULAR A BEDDING IN ACCORDANCE WITH OPSD 802.010, 802.030, 802.031,OR 802.032.
- ALL SEWERS ARE TO BE INSTALLED WITH GASKETED BELL AND SPIGOT PIPE AND TO THE APPROPRIATE OPSS, OPSD.
- PIPE SUPPORT AT MH'S, CB'S AND CBMH'S AS PER OPSD 708.020.
- ALL SANITARY MAINTENANCE HOLES AND STORM MAINTENANCE HOLE CATCHBASINS TO BE PRECAST (UNLESS OTHERWISE NOTED) CONFORMING TO:
 - 5.a.a.a. 1200mmø MANHOLE TO OPSD-701.010
 - 5.a.a.b. 1500mmø MANHOLE TO OPSD-701.011
- ALL CATCHBASINS TO BE PRECAST CONFORMING TO:
 - 6.a.a.a. 600mmX600mm CATCHBASIN TO OPSD-705.010
- ALL AREA DRAINS TO BE NYLOPLAST BY ADS (375mm DIA.)
- MH'S TO BE INSTALLED WITH CRETEX RUBBER SEALS BETWEEN MH SECTIONS. KOR-N-SEAL RUBBER BOOTS USED FOR ALL SANITARY PIPE CONNECTIONS AND WHEN USING SDR35 PIPE OR STORM SEWERS. ALL SANITARY MH EXTERNAL JOINTS TO BE WRAPPED IN 300 MM DENSO TAPE, OR APPROVED EQUIVALENT. FROST STRAPPING SHALL BE INSTALLED AS PER OPSD 701.100. ALL SANITARY MAINTENANCE HOLES REQUIRE BENCHING AS PER OPSD 701.021.
- ALL CB AND CBMH TO BE FRAMES AND COVERS (OPSD 400.020).
- ALL LIDS IN ROADWAY TO USE AUTOSTABLE FRAME AND LID MANUFACTURED BY BIBBY-STE-CROIX TO BE SET TO BASE COURSE ASPHALT ELEVATION AND RAISED TO SURFACE ELEVATION PRIOR TO INSTALLATION OF SURFACE ASPHALT. SANITARY MH SHALL BE CLOSED COVER. STORM MH SHALL BE OPEN COVER. FRAME AND COVER SHALL BE ADJUSTED USING CONCRETE ADJUSTMENT UNITS AND PARGED ON OUTSIDE ONLY.
- ALL STORM CB TO HAVE A MINIMUM SUMP OF 600 MM AND ALL MH AND CBMH TO HAVE A 300 MM SUMP. SEWER GREATER THAN 450 MM DIAMETER REQUIRE BENCHING.
- THE FOLLOWING TEST REQUIREMENTS OF SANITARY AND STORM SEWERS SHALL BE COMPLETED IN ACCORDANCE WITH OPSS 410 AFTER THE PLACEMENT OF CURB AND GUTTER AND BASE ASPHALT:
 - A. FLUSHING OF ALL SEWER MAINS AND SERVICES.
 - B. SANITARY CCTV:
 - I. AFTER PLACEMENT OF CURB AND BASE ASPHALT, PRIOR TO PRELIMINARY ACCEPTANCE (MAIN AND SERVICES)
 - II. PRIOR TO FINAL ACCEPTANCE (MAIN AND SERVICES)
 - C. STORM CCTV:
 - I. AFTER PLACEMENT OF CURB AND BASE ASPHALT, PRIOR TO PRELIMINARY ACCEPTANCE (MAIN INCLUDING CB LATERALS AND REAR/SIDE YARD SEWERS AND SERVICES)
- DEFLECTION TESTING (MANDREL) OF FLEXIBLE SANITARY AND STORM SEWER MAINS INCLUDING CB LATERALS AND REAR/SIDE YARD STORM SEWERS.
- LEAKAGE TESTING (AIR TESTING) OF SANITARY SEWER MAINS AND SERVICES.
- STORM SEWERS, INCLUDING CATCHBASIN CONNECTIONS, SHALL HAVE A MINIMUM COVER OF 1.2M FROST COVER. WHERE COVER CANNOT MEET THE MINIMUM, CONTRACTOR IS TO PROVIDE 50mm RIGID SM BOX INSULATION.
- A MINIMUM CLEARANCE OF 0.50m SHALL BE PROVIDED BETWEEN THE OUTSIDE OF THE PIPE BARRELS AT THE POINT OF CROSSING FOR THE STORM AND SANITARY SEWERS.
- SUBDRAIN PIPE: PERFORATED BOSS 2000 CLASS 210, OUTFITTED WITH FILTER CLOTH, CORRUGATED, PERFORATED, HIGH DENSITY POLYETHYLENE PIPE AND FITTINGS TO ATSM D3350, OPSS 1840 AND CAN/CSA B182.6 AND AS MANUFACTURED BY BIG 'O'. PLUG ALL OPEN ENDS OF SUBDRAINS AT HIGH POINTS. GENERAL INSTALLATION AND TESTING OF SEWERS AND APPURTENANCES TO BE IN ACCORDANCE WITH OPSS 407, 408, 409(CCTV), 410 AND 421. 50MM DIAMETER MAXIMUM STONE SIZE FOR THE GRANULAR BACKFILL ON SUBDRAINS. WHEN CLEARSTONE IS USED FOR BEDDING, IT SHALL BE FULL WRAPPED IN FILTER CLOTH WITH A MINIMUM LAP OF 300mm.
- THE CONTRACTOR IS RESPONSIBLE FOR ALL BYPASSING OF SANITARY FLOWS INCLUDING PUMPING AND ENVIRONMENTAL CONTAINMENT.

M:\M - MUNICIPAL\2025\202511 - SHELBURNE PINE GROVE RECONSTRUCTION, SBA, CAD & REGIONAL PROJECTS\10-000001_SBA_CAD_DRAWING_V1_2025-04-07.dwg

1. THIS DRAWING IS THE EXCLUSIVE PROPERTY OF S. BURNETT & ASSOCIATES LIMITED AND THE REPRODUCTION OF ANY PART WITHOUT PRIOR WRITTEN CONSENT OF THIS OFFICE IS STRICTLY PROHIBITED.

2. THE CONTRACTOR SHALL VERIFY ALL DIMENSIONS, LEVELS AND DATUMS ON-SITE AND REPORT ANY DISCREPANCIES OR OMISSIONS TO THIS OFFICE PRIOR TO CONSTRUCTION.

3. THIS DRAWING IS TO BE READ AND UNDERSTOOD IN CONJUNCTION WITH ALL OTHER PLANS AND DOCUMENTS APPLICABLE TO THIS PROJECT.


4. DO NOT SCALE THE DRAWINGS.

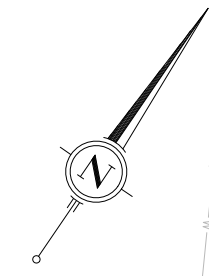
SITE BENCHMARK #1: NAIL ON HYDRO POLE AT THE INTERSECTION OF GORDON AVENUE AND ANDERSON AVENUE, HAVING AN ELEVATION OF 465.21 METRES.

SITE BENCHMARK #2: NAIL ON HYDRO POLE ALONG GORDON AVENUE APPROX. 70m SOUTH EAST FROM SOUTH WEST CORNER OF THE SUBJECT PROPERTY, HAVING AN ELEVATION OF 465.76 METRES.

No.	DATE	ISSUE/REVISION	No.	DATE	ISSUE/REVISION
1.	03-FEB-2026	ISSUED FOR 66% REVIEW			
2.	09-APR-2026	ISSUED FOR RFP			

CLIENT	TOWN OF SHELBURNE
PROJECT	PINE GROVE AVENUE RECONSTRUCTION & URBANIZATION
DRAWING TITLE	DRAWING INDEX & GENERAL NOTES

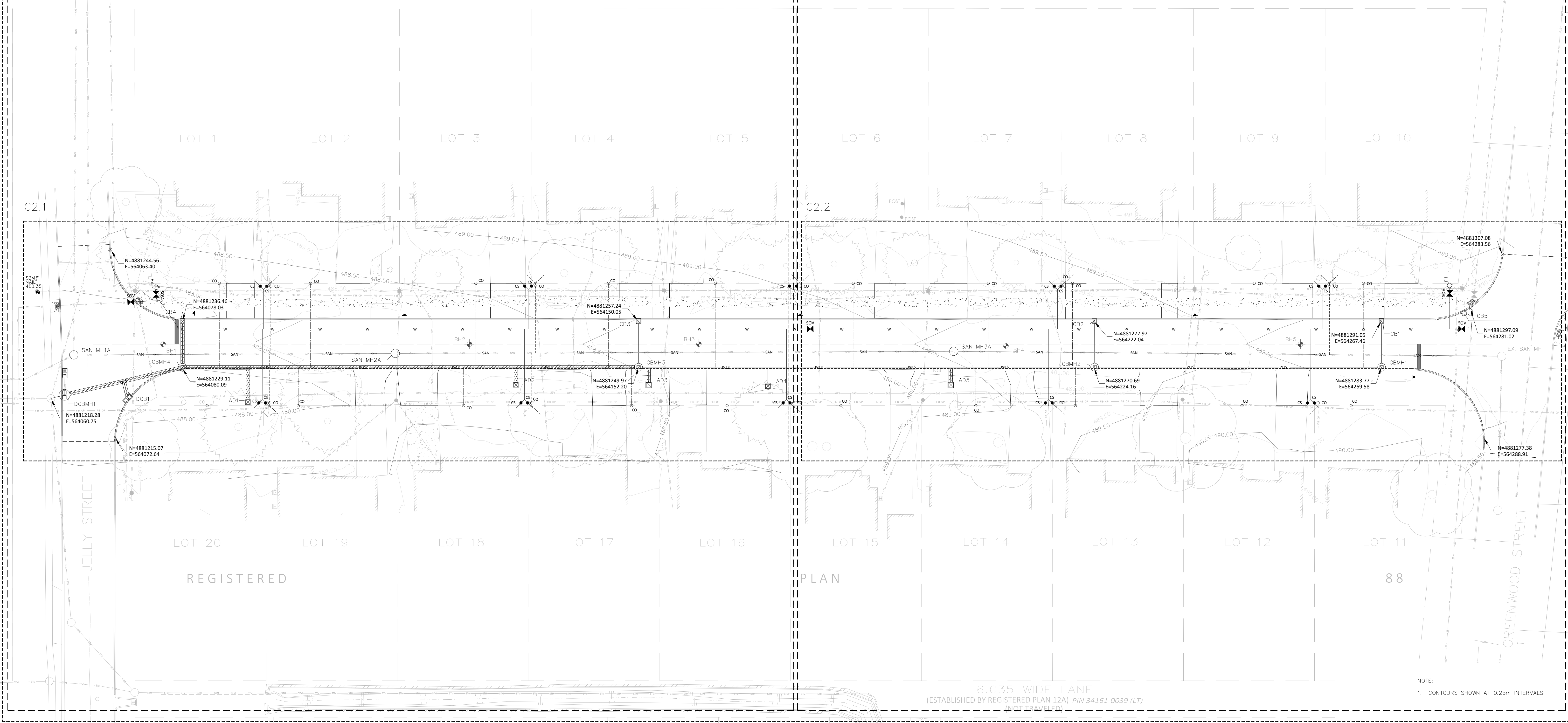
 S. BURNETT & ASSOCIATES LIMITED ENGINEERING AND ENVIRONMENTAL SERVICES 210 BROADWAY, UNIT 203 ORANGEVILLE, ONTARIO L9W 5G4 TELEPHONE: 519-941-2949 FAX: 519-941-2036							
DESIGNED BY	B.A.	DRAWN BY	A.P.	VERIFIED BY	S.B.	DRAWING No.	C0.1
SCALE	-	PROJECT No.	M25011				



C1.1, C1.2, C1.3

C1.4, C2.3

C1.5, C2.4



1. THIS DRAWING IS THE EXCLUSIVE PROPERTY OF S. BURNETT & ASSOCIATES LIMITED AND THE REPRODUCTION OF ANY PART WITHOUT PRIOR WRITTEN CONSENT OF THIS OFFICE IS STRICTLY PROHIBITED.

2. THE CONTRACTOR SHALL VERIFY ALL DIMENSIONS, LEVELS AND DATUMS ON-SITE AND REPORT ANY DISCREPANCIES OR OMISSIONS TO THIS OFFICE PRIOR TO CONSTRUCTION.

3. THIS DRAWING IS TO BE READ AND UNDERSTOOD IN CONJUNCTION WITH ALL OTHER PLANS AND DOCUMENTS APPLICABLE TO THIS PROJECT.

4. DO NOT SCALE THE DRAWINGS.

SITE BENCHMARK #1: NAIL ON HYDRO POLE AT THE INTERSECTION OF GORDON AVENUE AND ANDERSON AVENUE, HAVING AN ELEVATION OF 465.21 METRES.

SITE BENCHMARK #2: NAIL ON HYDRO POLE ALONG GORDON AVENUE APPROX. 70m SOUTH EAST FROM SOUTH WEST CORNER OF THE SUBJECT PROPERTY, HAVING AN ELEVATION OF 465.76 METRES.

PROF. STAMP

No.	DATE	ISSUE/REVISION	No.	DATE	ISSUE/REVISION
1.	03-FEB-2026	ISSUED FOR 66% REVIEW			
2.	09-APR-2026	ISSUED FOR RFP			

CLIENT
TOWN OF SHELBURNE

PROJECT
PINE GROVE AVENUE RECONSTRUCTION & URBANIZATION

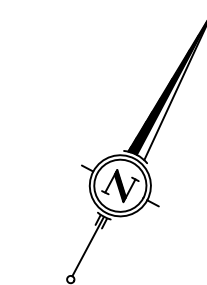
DRAWING TITLE
KEY PLAN

S. BURNETT & ASSOCIATES LIMITED
ENGINEERING AND ENVIRONMENTAL SERVICES
210 BROADWAY, UNIT 203
ORANGEVILLE, ONTARIO L9W 5G4
TELEPHONE: 519-941-2949 FAX: 519-941-2036

DESIGNED BY: B.A. DRAWN BY: A.P. VERIFIED BY: S.B. DRAWING No.: M25011

SCALE: 1:300 PROJECT No.: M25011

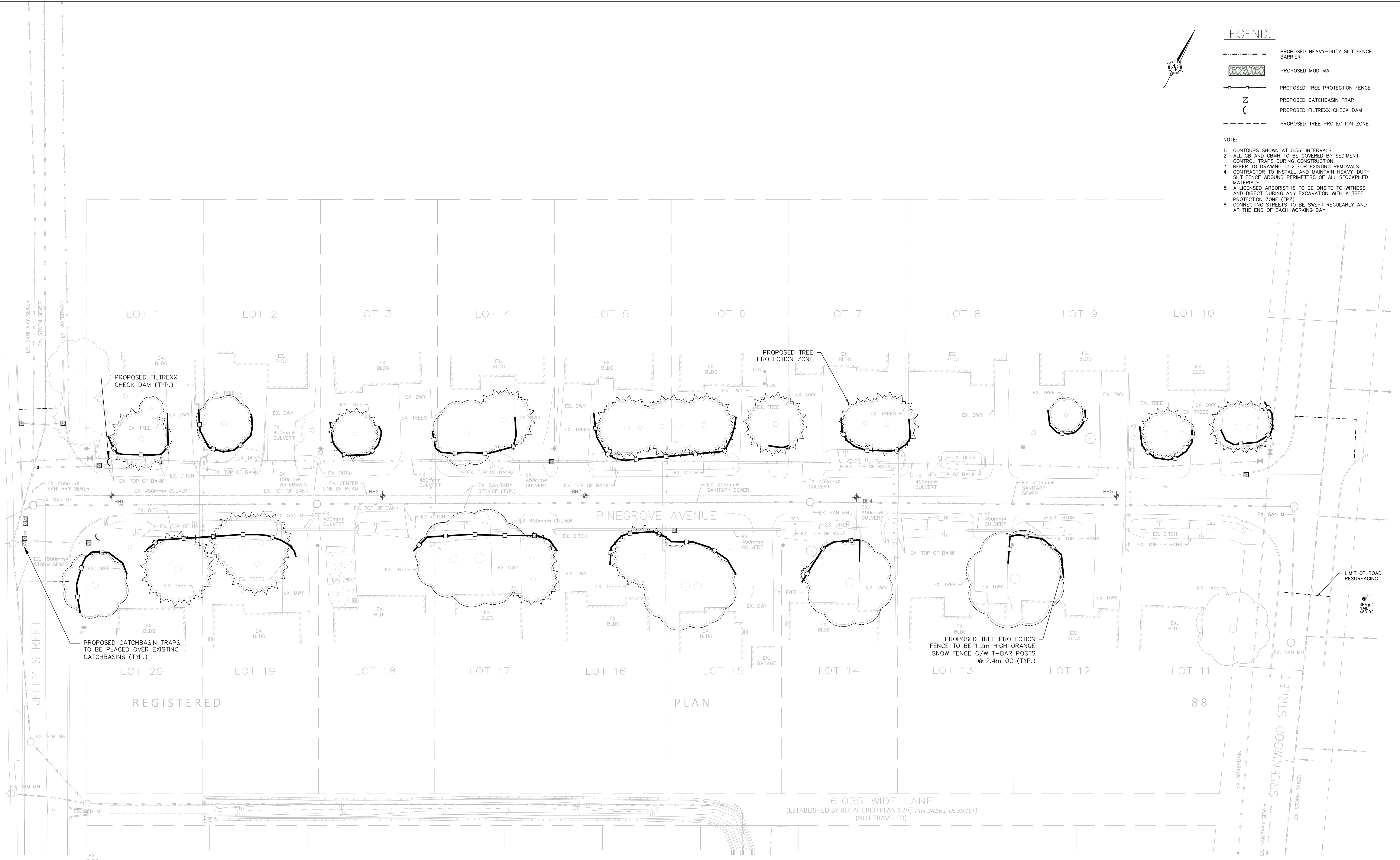
C1.1



LEGEND:

- PROPOSED HEAVY-DUTY SILT FENCE BARRIER
- PROPOSED MUD MAT
- PROPOSED TREE PROTECTION FENCE
- PROPOSED CATCHBASIN TRAP
- PROPOSED FILTREXX CHECK DAM
- PROPOSED TREE PROTECTION ZONE

- NOTE:**
1. CONTOURS SHOWN AT 0.5m INTERVALS.
 2. ALL CB AND CBMH TO BE COVERED BY SEDIMENT CONTROL TRAPS DURING CONSTRUCTION.
 3. REFER TO DRAWING C1.2 FOR EXISTING REMOVALS.
 4. CONTRACTOR TO INSTALL AND MAINTAIN HEAVY-DUTY SILT FENCE AROUND PERIMETERS OF ALL STOCKPILED MATERIALS.
 5. A LICENSED ARBORIST IS TO BE ONSITE TO WITNESS AND DIRECT DURING ANY EXCAVATION WITH A TREE PROTECTION ZONE (TPZ).
 6. CONNECTING STREETS TO BE SWEEPED REGULARLY AND AT THE END OF EACH WORKING DAY.



1. THIS DRAWING IS THE EXCLUSIVE PROPERTY OF S. BURNETT & ASSOCIATES LIMITED AND THE REPRODUCTION OF ANY PART WITHOUT PRIOR WRITTEN CONSENT OF THIS OFFICE IS STRICTLY PROHIBITED.

2. THE CONTRACTOR SHALL VERIFY ALL DIMENSIONS, LEVELS AND DATUMS ON-SITE AND REPORT ANY DISCREPANCIES OR OMISSIONS TO THIS OFFICE PRIOR TO CONSTRUCTION.

3. THIS DRAWING IS TO BE READ AND UNDERSTOOD IN CONJUNCTION WITH ALL OTHER PLANS AND DOCUMENTS APPLICABLE TO THIS PROJECT.

4. DO NOT SCALE THE DRAWINGS.

SITE BENCHMARK #1: NAIL ON HYDRO POLE AT THE INTERSECTION OF GORDON AVENUE AND ANDERSON AVENUE, HAVING AN ELEVATION OF 465.21 METRES.

SITE BENCHMARK #2: NAIL ON HYDRO POLE ALONG GORDON AVENUE APPROX. 70m SOUTH EAST FROM SOUTH WEST CORNER OF THE SUBJECT PROPERTY, HAVING AN ELEVATION OF 465.76 METRES.

No.	DATE	ISSUE/REVISION	No.	DATE	ISSUE/REVISION
1.	03-FEB-2026	ISSUED FOR 66% REVIEW			
2.	09-APR-2026	ISSUED FOR RFP			

CLIENT: TOWN OF SHELburnE

PROJECT: PINE GROVE AVENUE RECONSTRUCTION & URBANIZATION

DRAWING TITLE: PROPOSED EROSION & SEDIMENT CONTROL PLAN

S. BURNETT & ASSOCIATES LIMITED
ENGINEERING AND ENVIRONMENTAL SERVICES

210 BROADWAY, UNIT 203
ORANGEVILLE, ONTARIO L9W 5G4
TELEPHONE: 519-941-2949 FAX: 519-941-2036

DESIGNED BY: B.A.	DRAWN BY: A.P.	VERIFIED BY: S.B.	DRAWING No.:
SCALE: 1:300		PROJECT No. M25011	

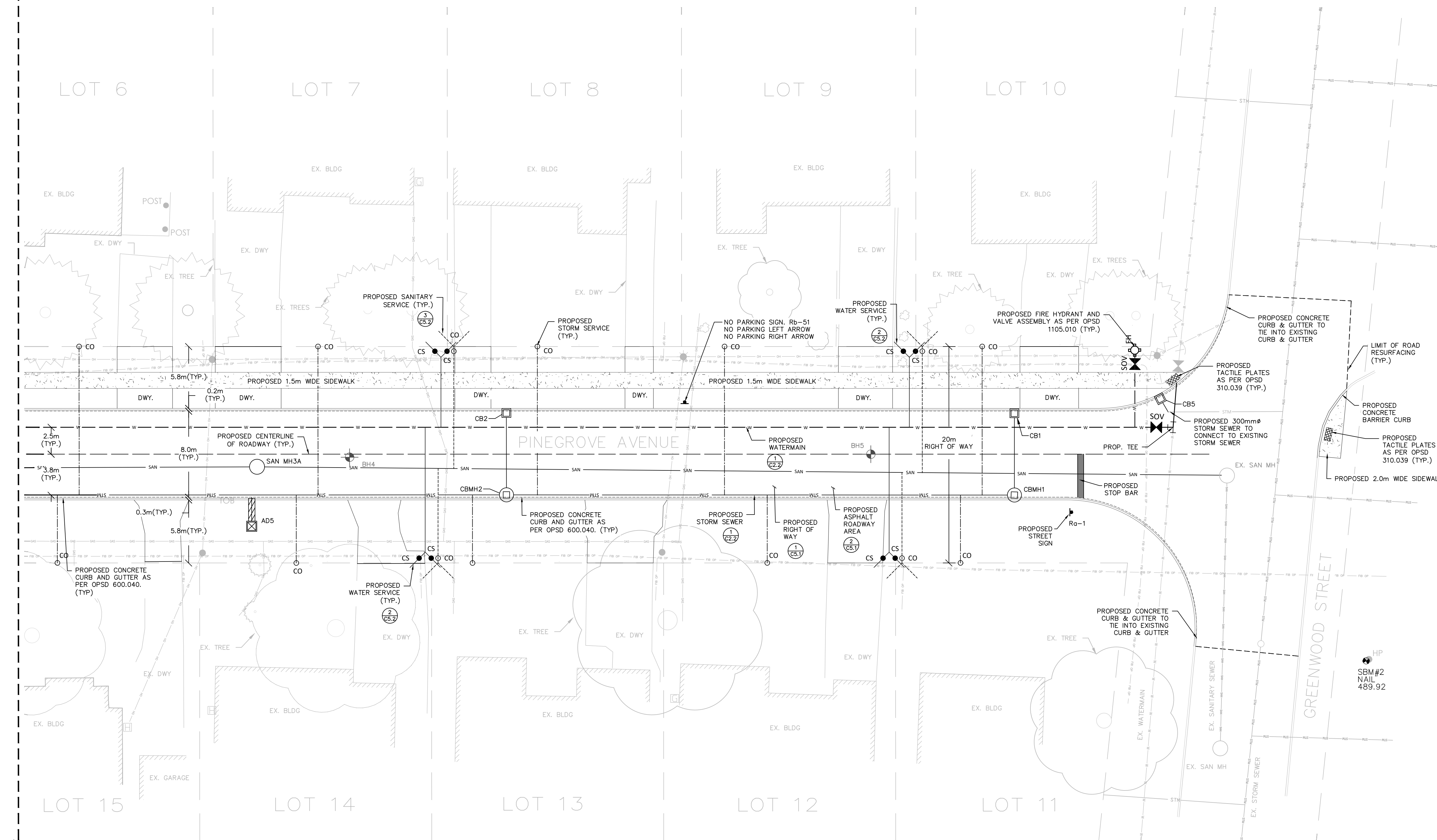
C1.3

PROF. STAMP

LEGEND:

- PROPOSED (AS SPECIFIED)
- - - EXISTING (AS SPECIFIED)
- — — PROPERTY LINE
- x - x - FENCE (AS SPECIFIED)
- - - - - CENTERLINE (AS SPECIFIED)
- ~ ~ ~ TREE LINE
- TREE (STAND ALONE)
- w — WATERMAIN
- CS CS DOUBLE WATER SERVICE WITH CURBSTOP
- CS CS SINGLE WATER SERVICE WITH CURBSTOP
- ⊕ FIRE HYDRANT
- ⊕ SHUT OFF VALVE & BOX
- CO — GRAVITY SANITARY SEWER
- CO — SINGLE SANITARY SERVICE WITH CLEAN OUT
- CO — DOUBLE SANITARY SERVICE WITH CLEAN OUT
- CO — SINGLE STORM SERVICE WITH CLEAN OUT
- MH SANITARY MAINTENANCE HOLE / STORM MAINTENANCE HOLE
- ⊕ DCMH DOUBLE CATCHBASIN MAINTENANCE HOLE
- ⊕ CBMH CATCHBASIN MAINTENANCE HOLE
- DCB GRAVITY STORM SEWER
- CB DOUBLE INLET CATCH BASIN
- CATCH BASIN
- — — — — CULVERT/BURIED TANK (AS SPECIFIED)
- - - - - CENTERLINE OF DITCH/SWALE
- HPL/LS HYDRO POLE/LIGHT STANDARD
- BOL BOLLARD
- BH BOREHOLE
- 456.53 SPOT ELEVATION
- 2.0% SLOPE PERCENTAGE
- — — — — TOP OF BANK
- — — — — BOTTOM OF BANK
- — — — — BENCHMARK
- — — — — PROPOSED BUILDING EDGE
- DETAIL CALLOUT, DETAIL NUMBER
- DETAIL CALLOUT, DRAWING NUMBER
- ⊕ SIGN
- ⊕ Ra-1 STOP SIGN
- ⊕ STREET SIGN
- ▨ PROPOSED TACTILE PLATE
- ▨ CHAIN LINK FENCE
- ▨ STORM SEWER INSULATION

- NOTE:**
1. PROPOSED PIPES TO BE C/W 600mm WIDE X 50mm THICK RIGID SM INSULATION WHERE MINIMUM COVER DEPTH CANNOT BE ACHIEVED. CONTRACTOR TO MAINTAIN MINIMUM VERTICAL 500mm CLEARANCE BETWEEN PROPOSED PIPES' OUTER DIAMETERS.
 2. CONTRACTOR SHALL ENSURE ALL NECESSARY EROSION AND SEDIMENTATION CONTROL STEPS ARE PROVIDED TO PREVENT TRANSPORTATION OF SOIL INTO PROPOSED CATCHBASINS FOLLOWING ANY EARTH DISTURBANCES OR EXCAVATION.
 3. EXISTING STORM AND SANITARY SEWER CONNECTION ELEVATIONS WILL BE CHECKED & CLARIFIED BY THE CONTRACTOR AND COORDINATED WITH THE ENGINEER BEFORE STARTING CONSTRUCTION.



MATCH LINE REFER TO DRAWING C2.1

1. THIS DRAWING IS THE EXCLUSIVE PROPERTY OF S. BURNETT & ASSOCIATES LIMITED AND THE REPRODUCTION OF ANY PART WITHOUT PRIOR WRITTEN CONSENT OF THIS OFFICE IS STRICTLY PROHIBITED.

2. THE CONTRACTOR SHALL VERIFY ALL DIMENSIONS, LEVELS AND DATUMS ON-SITE AND REPORT ANY DISCREPANCIES OR OMISSIONS TO THIS OFFICE PRIOR TO CONSTRUCTION.

3. THIS DRAWING IS TO BE READ AND UNDERSTOOD IN CONJUNCTION WITH ALL OTHER PLANS AND DOCUMENTS APPLICABLE TO THIS PROJECT.

4. DO NOT SCALE THE DRAWINGS.

SITE BENCHMARK #1: NAIL ON HYDRO POLE AT THE INTERSECTION OF GORDON AVENUE AND ANDERSON AVENUE, HAVING AN ELEVATION OF 465.21 METRES.

SITE BENCHMARK #2: NAIL ON HYDRO POLE ALONG GORDON AVENUE APPROX. 70m SOUTH EAST FROM SOUTH WEST CORNER OF THE SUBJECT PROPERTY, HAVING AN ELEVATION OF 465.76 METRES.

No.	DATE	ISSUE/REVISION	No.	DATE	ISSUE/REVISION
1.	03-FEB-2026	ISSUED FOR 66% REVIEW			
2.	09-APR-2026	ISSUED FOR RFP			

CLIENT	TOWN OF SHELBURNE
PROJECT	PINE GROVE AVENUE RECONSTRUCTION & URBANIZATION
DRAWING TITLE	PROPOSED SITE PLAN SHEET 2

DESIGNED BY	B.A.	DRAWN BY	A.P.	VERIFIED BY	S.B.	DRAWING No.	
SCALE	1:200	PROJECT No.	M25011				

S. BURNETT & ASSOCIATES LIMITED
ENGINEERING AND ENVIRONMENTAL SERVICES

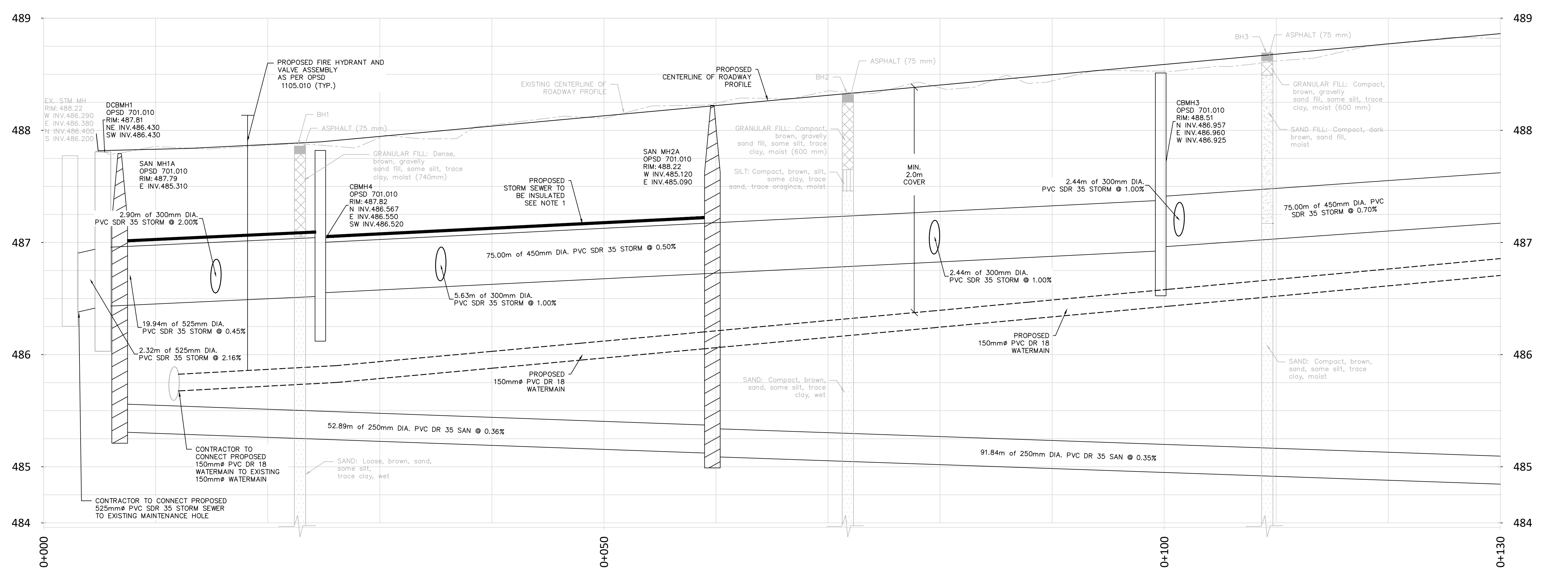
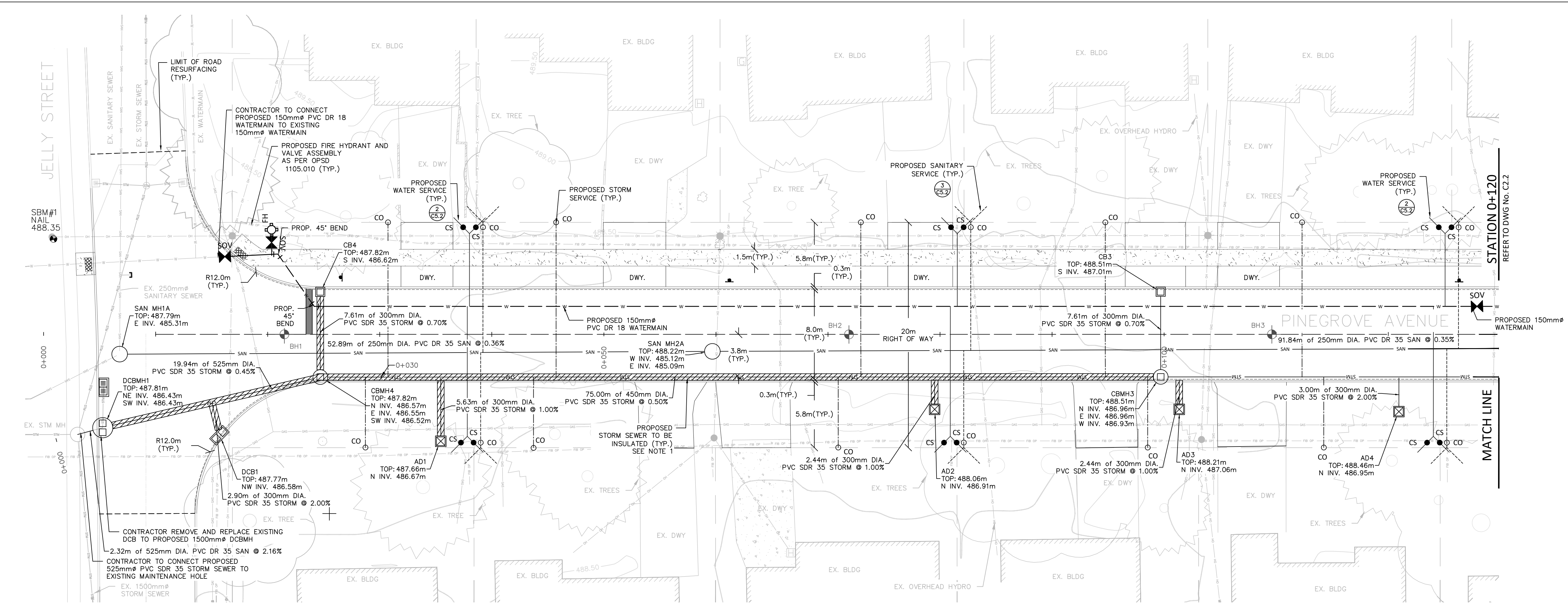
210 BROADWAY, UNIT 203
ORANGEVILLE, ONTARIO L9W 5G4
TELEPHONE: 519-941-2949 FAX: 519-941-2036

C1.5

LEGEND:

- PROPOSED (AS SPECIFIED)
- - - EXISTING (AS SPECIFIED)
- — — PROPERTY LINE
- x - x - FENCE (AS SPECIFIED)
- — — CENTERLINE (AS SPECIFIED)
- — — TREE LINE
- TREE (STAND ALONE)
- w — WATERMAIN
- CS DOUBLE WATER SERVICE WITH CURBSTOP
- CS SINGLE WATER SERVICE WITH CURBSTOP
- FIRE HYDRANT
- SHUT OFF VALVE & BOX
- CO — GRAVITY SANITARY SEWER
- CO — SINGLE SANITARY SERVICE WITH CLEAN OUT
- CO — DOUBLE SANITARY SERVICE WITH CLEAN OUT
- CO — SINGLE STORM SERVICE WITH CLEAN OUT
- MH SANITARY MAINTENANCE HOLE / STORM MAINTENANCE HOLE
- DCBMH DOUBLE CATCHBASIN MAINTENANCE HOLE
- CBMH CATCHBASIN MAINTENANCE HOLE
- DCB GRAVITY INLET SEWER
- CB DOUBLE INLET CATCH BASIN
- CATCH BASIN
- — — CULVERT/BURIED TANK (AS SPECIFIED)
- — — CENTERLINE OF DITCH/SWALE
- H/P/LS HYDRO POLE/LIGHT STANDARD
- BOL BOLLARD
- BH BOREHOLE
- 456.53 SPOT ELEVATION
- 2.0% SLOPE PERCENTAGE
- — — TOP OF BANK
- — — BOTTOM OF BANK
- BENCHMARK
- — — PROPOSED BUILDING EDGE
- DETAIL CALLOUT, DETAIL NUMBER
- DETAIL CALLOUT, DRAWING NUMBER
- SIGN
- Ra-1 STOP SIGN
- STREET SIGN
- — — PROPOSED TACTILE PLATE
- — — CHAIN LINK FENCE
- — — STORM SEWER INSULATION

- NOTE:**
1. PROPOSED PIPES TO BE C/W 600mm WIDE X 50mm THICK RIGID SM INSULATION WHERE MINIMUM COVER DEPTH CANNOT BE ACHIEVED. CONTRACTOR TO MAINTAIN MINIMUM VERTICAL CLEARANCE BETWEEN PROPOSED PIPES' OUTER DIAMETERS.
 2. CONTRACTOR SHALL ENSURE ALL NECESSARY EROSION AND SEDIMENTATION CONTROL STEPS ARE PROVIDED TO PREVENT TRANSPORTATION OF SOIL INTO PROPOSED CATCHBASINS FOLLOWING ANY EARTH DISTURBANCES OR EXCAVATION.
 3. EXISTING STORM AND SANITARY SEWER CONNECTION ELEVATIONS WILL BE CHECKED & CLARIFIED BY THE CONTRACTOR AND COORDINATED WITH THE ENGINEER BEFORE STARTING CONSTRUCTION.



M:\M - MUNICIPAL\PROJECTS\2025\25042025 - SHELburne PINE GROVE RECONSTRUCTION, SBA, CAD & DESIGN\DWG\25042025_1_PIPES_CAD.DWG (1) 2025-04-22 09:58

1. THIS DRAWING IS THE EXCLUSIVE PROPERTY OF S. BURNETT & ASSOCIATES LIMITED AND THE REPRODUCTION OF ANY PART WITHOUT PRIOR WRITTEN CONSENT OF THIS OFFICE IS STRICTLY PROHIBITED.
 2. THE CONTRACTOR SHALL VERIFY ALL DIMENSIONS, LEVELS AND DATUMS ON-SITE AND REPORT ANY DISCREPANCIES OR OMISSIONS TO THIS OFFICE PRIOR TO CONSTRUCTION.
 3. THIS DRAWING IS TO BE READ AND UNDERSTOOD IN CONJUNCTION WITH ALL OTHER PLANS AND DOCUMENTS APPLICABLE TO THIS PROJECT.
 4. DO NOT SCALE THE DRAWINGS.

SITE BENCHMARK #1: NAIL ON HYDRO POLE AT THE INTERSECTION OF GORDON AVENUE AND ANDERSON AVENUE, HAVING AN ELEVATION OF 465.21 METRES.
 SITE BENCHMARK #2: NAIL ON HYDRO POLE ALONG GORDON AVENUE APPROX. 70m SOUTH EAST FROM SOUTH WEST CORNER OF THE SUBJECT PROPERTY, HAVING AN ELEVATION OF 465.76 METRES.

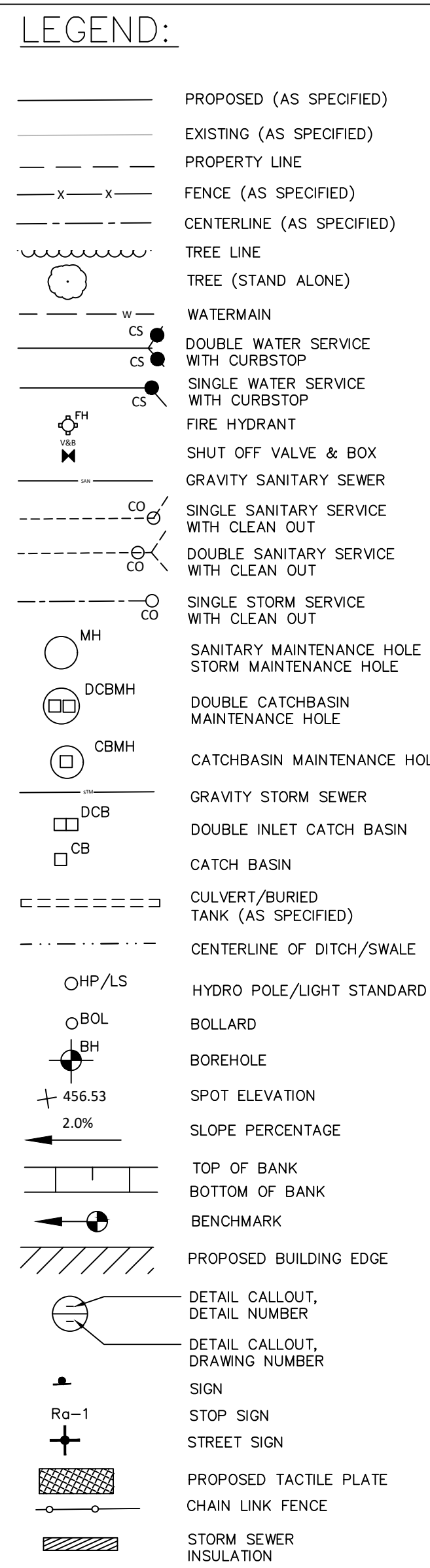
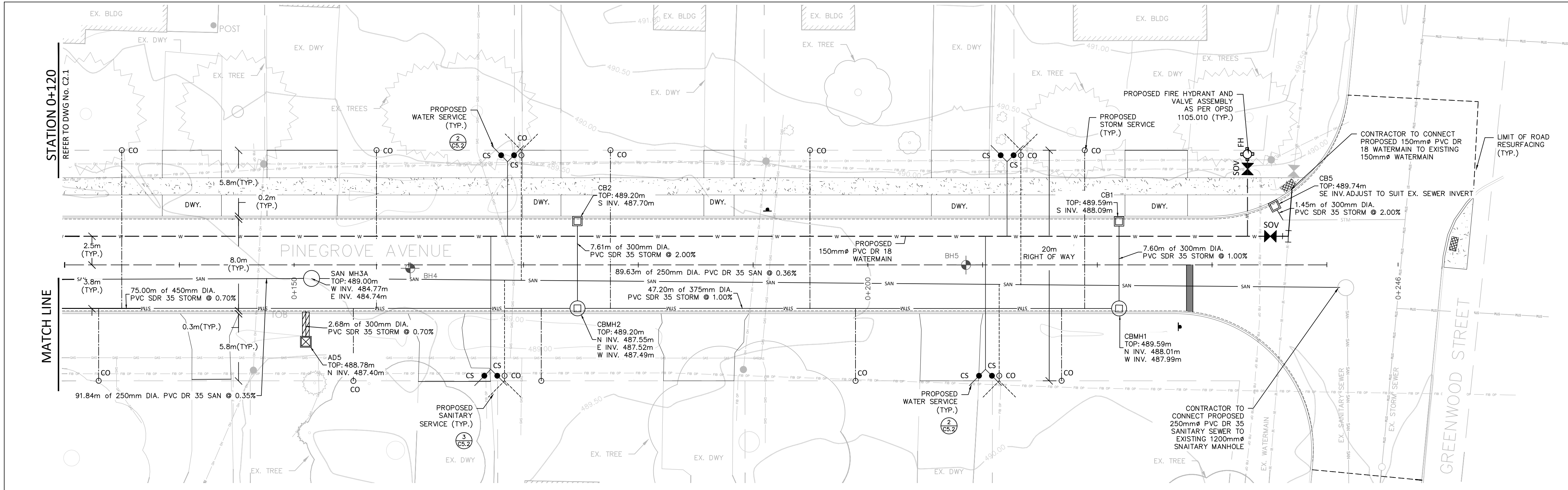
No.	DATE	ISSUE/REVISION	No.	DATE	ISSUE/REVISION
1.	03-FEB-2026	ISSUED FOR 66% REVIEW			
2.	09-APR-2026	ISSUED FOR RFP			

CLIENT: TOWN OF SHELburne
 PROJECT: PINE GROVE AVENUE RECONSTRUCTION & URBANIZATION
 DRAWING TITLE: PROPOSED SERVICING PLAN & PROFILE STA. 0+000 TO STA. 0+120

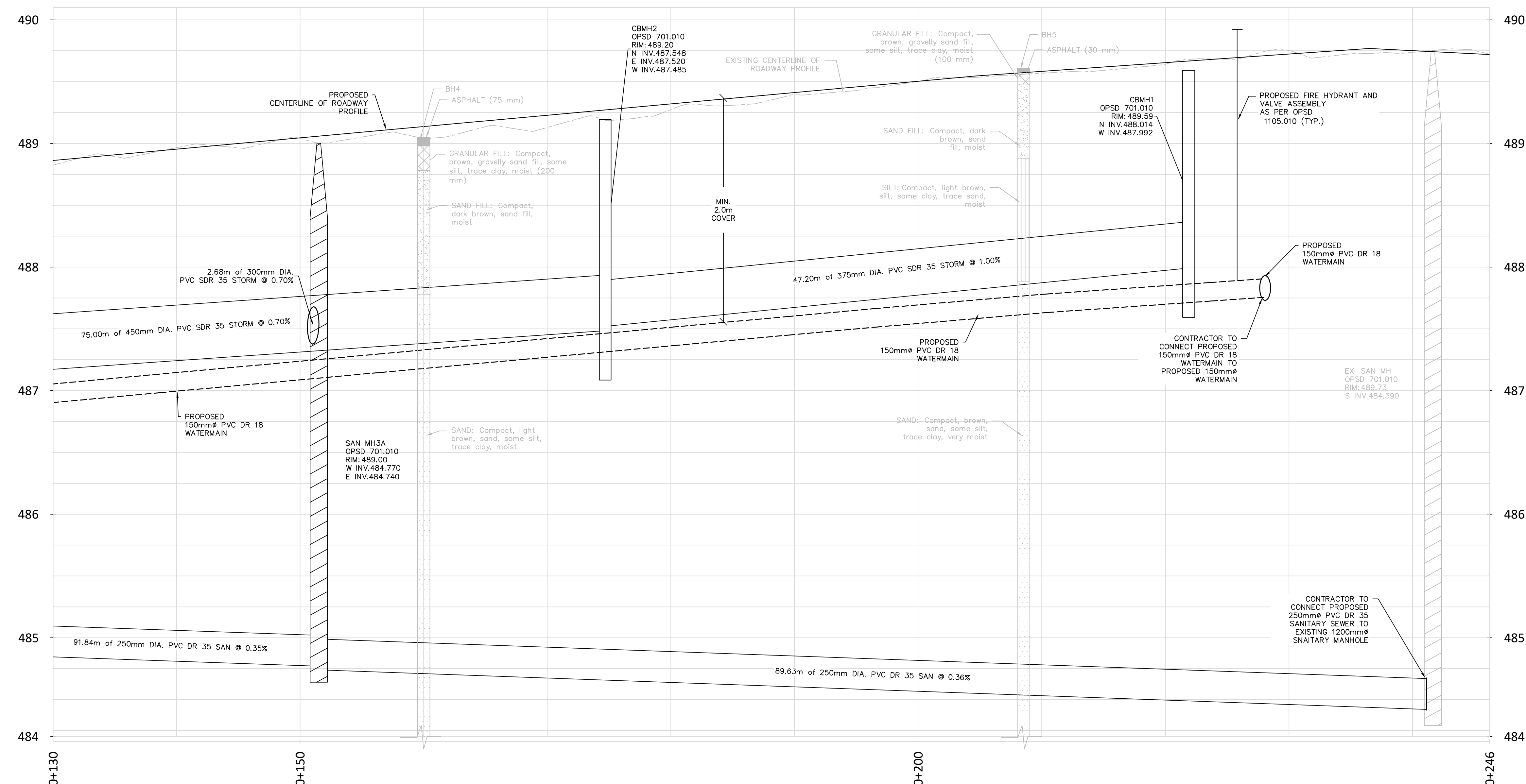
S. BURNETT & ASSOCIATES LIMITED
 ENGINEERING AND ENVIRONMENTAL SERVICES
 210 BROADWAY, UNIT 203
 ORANGEVILLE, ONTARIO L9W 5G4
 TELEPHONE: 519-941-2949 FAX: 519-941-2036

DESIGNED BY: B.A.
 DRAWN BY: A.P.
 VERIFIED BY: S.B.
 DRAWING NO.: M25011

SCALE: HOR 1:200, VERT 1:20
 PROJECT NO.: M25011
C2.1



- NOTE:
- PROPOSED PIPES TO BE C/W 600mm WIDE X 50mm THICK RIGID SM INSULATION WHERE MINIMUM COVER DEPTH CANNOT BE ACHIEVED. CONTRACTOR TO MAINTAIN MINIMUM VERTICAL 500mm CLEARANCE BETWEEN PROPOSED PIPES' OUTER DIAMETERS.
 - CONTRACTOR SHALL ENSURE ALL NECESSARY EROSION AND SEDIMENTATION CONTROL STEPS ARE PROVIDED TO PREVENT TRANSPORTATION OF SOIL INTO PROPOSED CATCHBASINS FOLLOWING ANY EARTH DISTURBANCES OR EXCAVATION.
 - EXISTING STORM AND SANITARY SEWER CONNECTION ELEVATIONS WILL BE CHECKED & CLARIFIED BY THE CONTRACTOR AND COORDINATED WITH THE ENGINEER BEFORE STARTING CONSTRUCTION.



1. THIS DRAWING IS THE EXCLUSIVE PROPERTY OF S. BURNETT & ASSOCIATES LIMITED AND THE REPRODUCTION OF ANY PART WITHOUT PRIOR WRITTEN CONSENT OF THIS OFFICE IS STRICTLY PROHIBITED.

2. THE CONTRACTOR SHALL VERIFY ALL DIMENSIONS, LEVELS AND DATUMS ON-SITE AND REPORT ANY DISCREPANCIES OR OMISSIONS TO THIS OFFICE PRIOR TO CONSTRUCTION.

3. THIS DRAWING IS TO BE READ AND UNDERSTOOD IN CONJUNCTION WITH ALL OTHER PLANS AND DOCUMENTS APPLICABLE TO THIS PROJECT.

4. DO NOT SCALE THE DRAWINGS.

SITE BENCHMARK #1: NAIL ON HYDRO POLE AT THE INTERSECTION OF GORDON AVENUE AND ANDERSON AVENUE, HAVING AN ELEVATION OF 465.21 METRES.

SITE BENCHMARK #2: NAIL ON HYDRO POLE ALONG GORDON AVENUE APPROX. 70m SOUTH EAST FROM SOUTH WEST CORNER OF THE SUBJECT PROPERTY, HAVING AN ELEVATION OF 465.76 METRES.

No.	DATE	ISSUE/REVISION	No.	DATE	ISSUE/REVISION
1.	03-FEB-2026	ISSUED FOR 66% REVIEW			
2.	09-APR-2026	ISSUED FOR RFP			

CLIENT: TOWN OF SHELburnE

PROJECT: PINE GROVE AVENUE RECONSTRUCTION & URBANIZATION

DRAWING TITLE: PROPOSED SERVICING PLAN & PROFILE STA. 0+120 TO STA. 0+245

DESIGNED BY: B.A. DRAWN BY: A.P. VERIFIED BY: S.B.

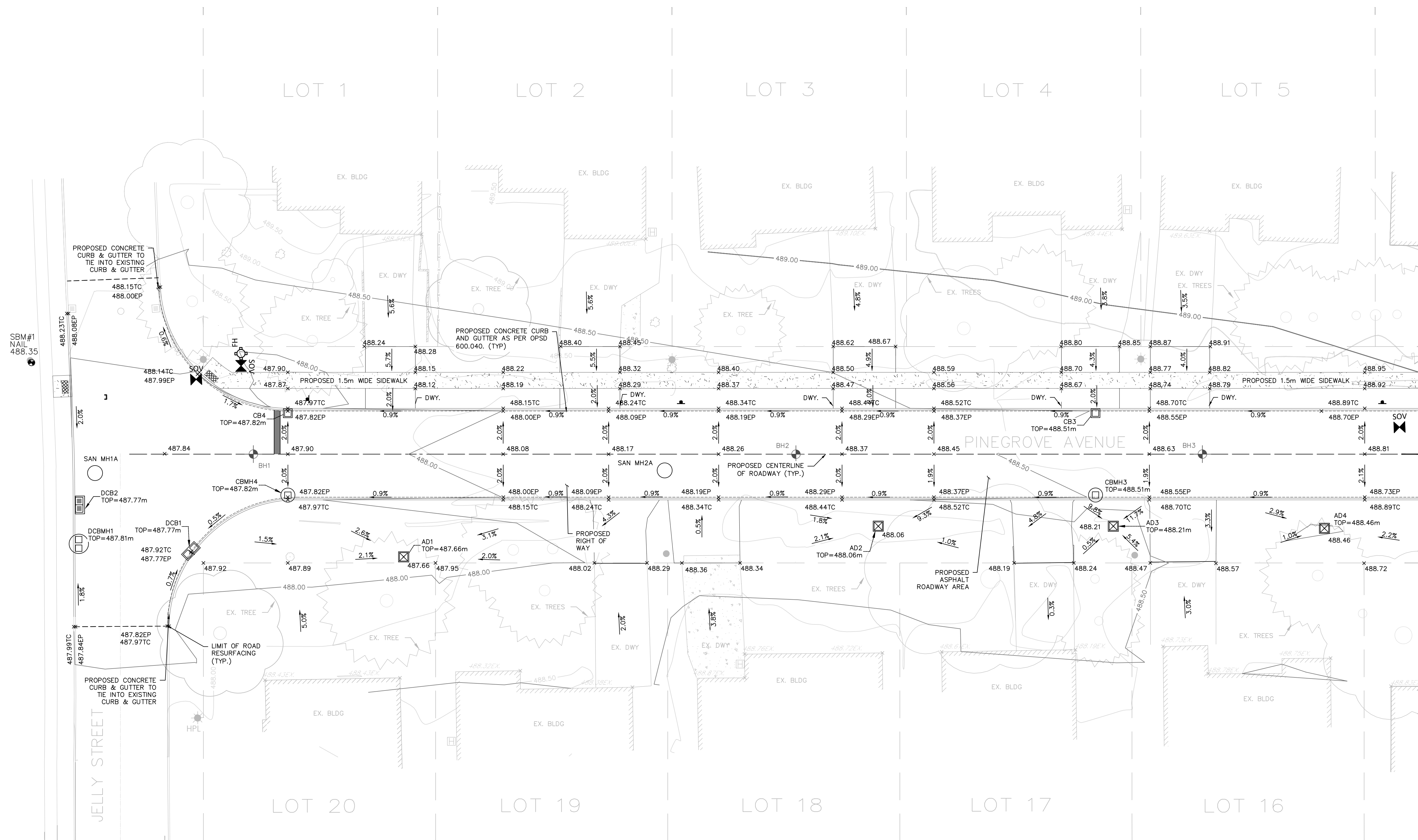
SCALE: HOR 1:200, VERT 1:20 PROJECT No: M25011

C2.2

LEGEND:

- PROPOSED (AS SPECIFIED)
- - - EXISTING (AS SPECIFIED)
- - - - - PROPERTY LINE
- x - x - FENCE (AS SPECIFIED)
- - - - - CENTERLINE (AS SPECIFIED)
- ~ ~ ~ TREE LINE
- TREE (STAND ALONE)
- w — WATERMAIN
- CS CS DOUBLE WATER SERVICE WITH CURBSTOP
- CS CS SINGLE WATER SERVICE WITH CURBSTOP
- ⊕ FIRE HYDRANT
- ⊕ SHUT OFF VALVE & BOX
- CO — GRAVITY SANITARY SEWER
- CO — SINGLE SANITARY SERVICE WITH CLEAN OUT
- CO — DOUBLE SANITARY SERVICE WITH CLEAN OUT
- CO — SINGLE STORM SERVICE WITH CLEAN OUT
- MH SANITARY MAINTENANCE HOLE / STORM MAINTENANCE HOLE
- ⊕ DCBMH DOUBLE CATCHBASIN MAINTENANCE HOLE
- ⊕ CBMH CATCHBASIN MAINTENANCE HOLE
- GRV — GRAVITY STORM SEWER
- ⊕ DCB DOUBLE INLET CATCH BASIN
- ⊕ CB CATCH BASIN
- — — — — CULVERT/BURIED TANK (AS SPECIFIED)
- - - - - CENTERLINE OF DITCH/SWALE
- OHP/LS HYDRO POLE/LIGHT STANDARD
- BOL BOLLARD
- BH BOREHOLE
- ± 456.53 SPOT ELEVATION
- 2.0% SLOPE PERCENTAGE
- TOP OF BANK
- BOTTOM OF BANK
- ⊕ BENCHMARK
- ▭ PROPOSED BUILDING EDGE
- DETAIL CALLOUT, DETAIL NUMBER
- DETAIL CALLOUT, DRAWING NUMBER
- ⊕ SIGN
- ⊕ Ro-1 STOP SIGN
- ⊕ STREET SIGN
- ▨ PROPOSED TACTILE PLATE
- ▨ CHAIN LINK FENCE
- ▨ STORM SEWER INSULATION

- NOTE:
1. PROPOSED PIPES TO BE C/W 600mm WIDE X 50mm THICK RIGID SM INSULATION WHERE MINIMUM COVER DEPTH CANNOT BE ACHIEVED. CONTRACTOR TO MAINTAIN MINIMUM VERTICAL 500mm CLEARANCE BETWEEN PROPOSED PIPES' OUTER DIAMETERS.
 2. CONTRACTOR SHALL ENSURE ALL NECESSARY EROSION AND SEDIMENTATION CONTROL STEPS ARE PROVIDED TO PREVENT TRANSPORTATION OF SOIL INTO PROPOSED CATCHBASINS FOLLOWING ANY EARTH DISTURBANCES OR EXCAVATION.
 3. EXISTING STORM AND SANITARY SEWER CONNECTION ELEVATIONS WILL BE CHECKED & CLARIFIED BY THE CONTRACTOR AND COORDINATED WITH THE ENGINEER BEFORE STARTING CONSTRUCTION.



M:\M - MUNICIPAL\2025\202501 - SHELBURNE PINEGROVE RECONSTRUCTION\DRAWINGS\1. SBA CAD & REGIONAL
 2025.01.16.00\2025.01.16.00 - DRAFT V1 - 2025.04.02.DWG

1. THIS DRAWING IS THE EXCLUSIVE PROPERTY OF S. BURNETT & ASSOCIATES LIMITED AND THE REPRODUCTION OF ANY PART WITHOUT PRIOR WRITTEN CONSENT OF THIS OFFICE IS STRICTLY PROHIBITED.
 2. THE CONTRACTOR SHALL VERIFY ALL DIMENSIONS, LEVELS AND DATUMS ON-SITE AND REPORT ANY DISCREPANCIES OR OMISSIONS TO THIS OFFICE PRIOR TO CONSTRUCTION.
 3. THIS DRAWING IS TO BE READ AND UNDERSTOOD IN CONJUNCTION WITH ALL OTHER PLANS AND DOCUMENTS APPLICABLE TO THIS PROJECT.
 4. DO NOT SCALE THE DRAWINGS.

SITE BENCHMARK #1: NAIL ON HYDRO POLE AT THE INTERSECTION OF GORDON AVENUE AND ANDERSON AVENUE, HAVING AN ELEVATION OF 465.21 METRES.
 SITE BENCHMARK #2: NAIL ON HYDRO POLE ALONG GORDON AVENUE APPROX. 70m SOUTH EAST FROM SOUTH WEST CORNER OF THE SUBJECT PROPERTY, HAVING AN ELEVATION OF 465.76 METRES.

No.	DATE	ISSUE/REVISION	No.	DATE	ISSUE/REVISION
1.	03-FEB-2026	ISSUED FOR 66% REVIEW			
2.	09-APR-2026	ISSUED FOR RFP			

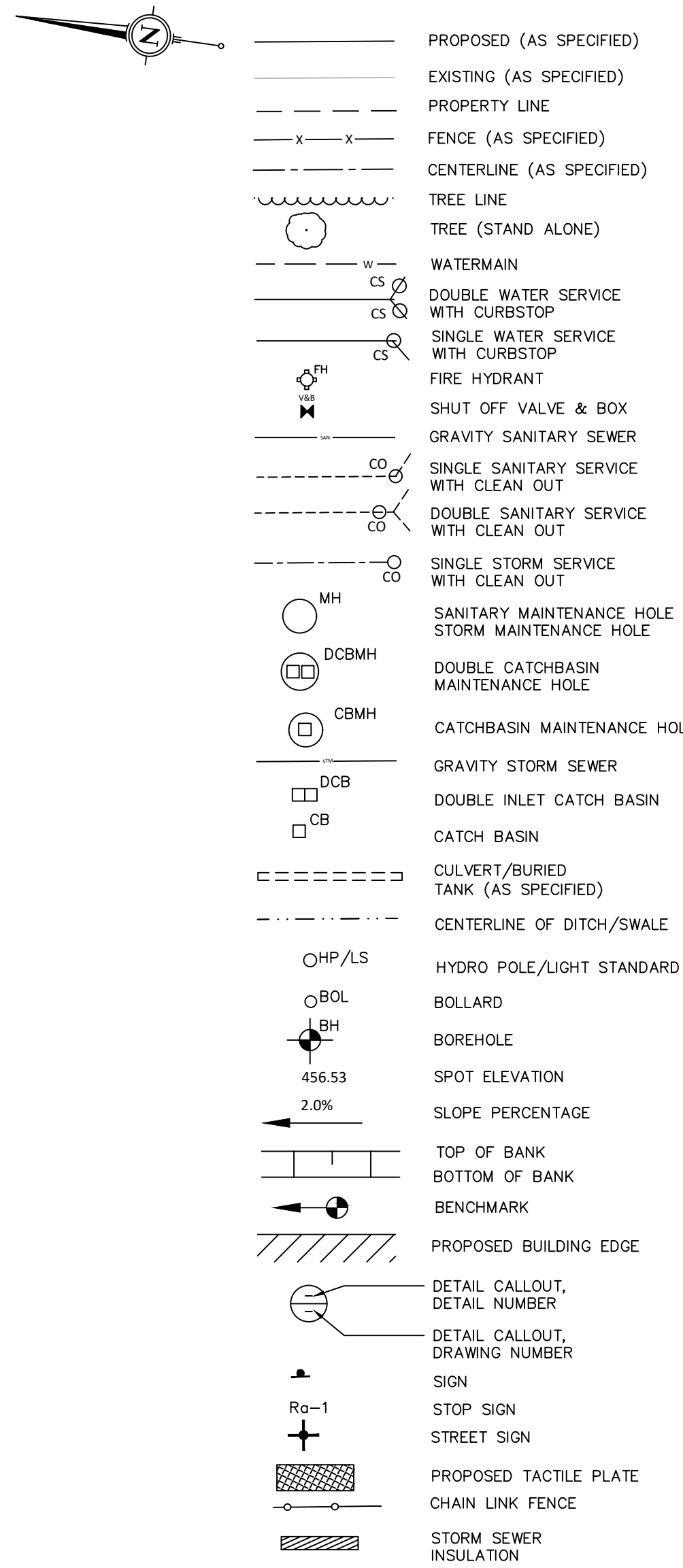
CLIENT: TOWN OF SHELBURNE
 PROJECT: PINE GROVE AVENUE RECONSTRUCTION & URBANIZATION
 DRAWING TITLE: PROPOSED GRADING PLAN SHEET 1

S. BURNETT & ASSOCIATES LIMITED
 ENGINEERING AND ENVIRONMENTAL SERVICES
 210 BROADWAY, UNIT 203
 ORANGEVILLE, ONTARIO L9W 5G4
 TELEPHONE: 519-941-2949 FAX: 519-941-2036

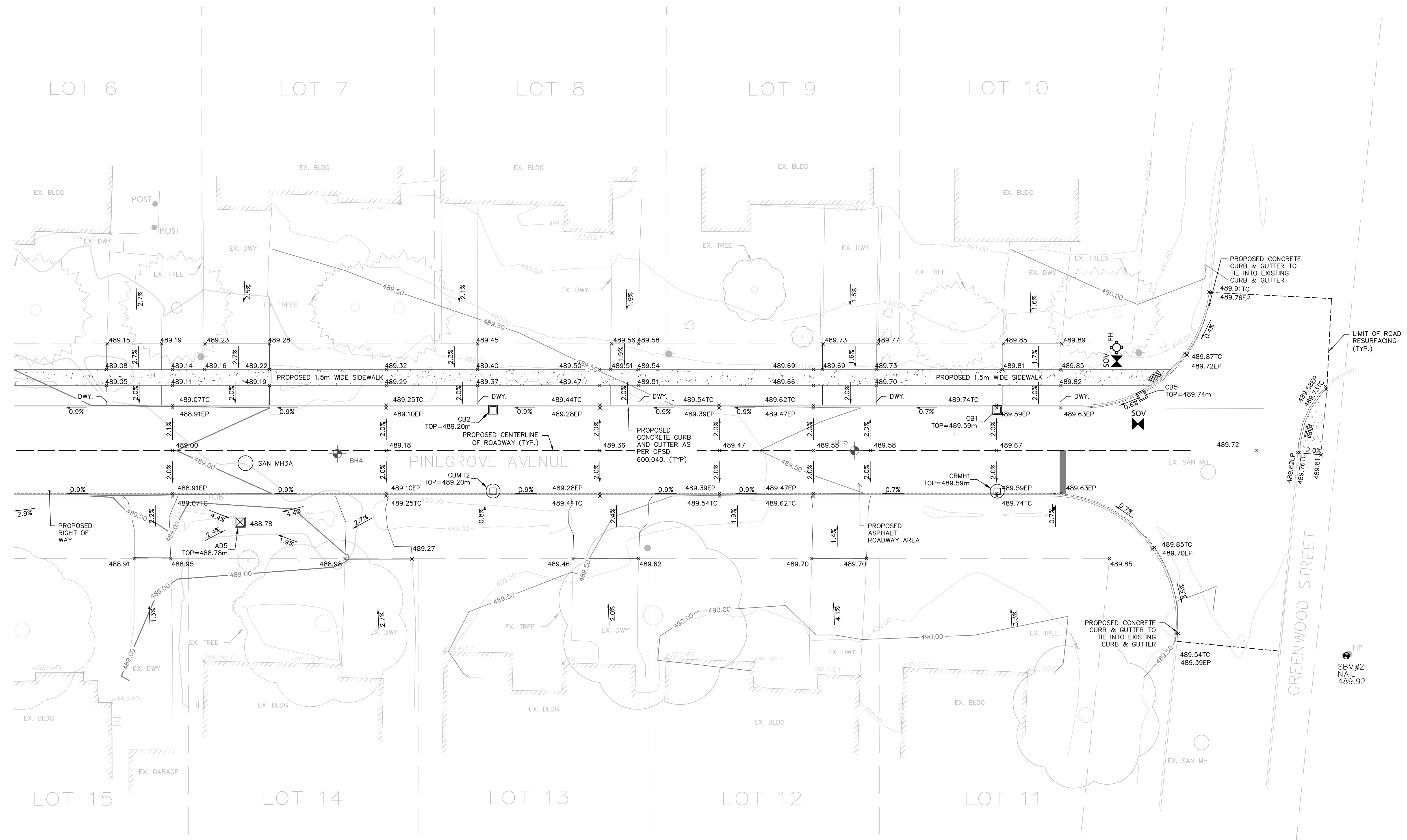
DESIGNED BY: B.A. DRAWN BY: A.P. VERIFIED BY: S.B. DRAWING NO.:
 SCALE: 1:200 PROJECT NO.: M25011

C2.3

LEGEND:



- NOTE:
1. PROPOSED PIPES TO BE C/W 600mm WIDE X 50mm THICK RIGID SM INSULATION WHERE MINIMUM COVER DEPTH CANNOT BE ACHIEVED. CONTRACTOR TO MAINTAIN MINIMUM VERTICAL 500mm CLEARANCE BETWEEN PROPOSED PIPES' OUTER DIAMETERS.
 2. CONTRACTOR SHALL ENSURE ALL NECESSARY EROSION AND SEDIMENTATION CONTROL STEPS ARE PROVIDED TO PREVENT TRANSPORTATION OF SOIL INTO PROPOSED CATCHBASINS FOLLOWING ANY EARTH DISTURBANCES OR EXCAVATION.
 3. EXISTING STORM AND SANITARY SEWER CONNECTION ELEVATIONS WILL BE CHECKED & CLARIFIED BY THE CONTRACTOR AND COORDINATED WITH THE ENGINEER BEFORE STARTING CONSTRUCTION.



MATCH LINE REFER TO DRAWING C2.3

1. THIS DRAWING IS THE EXCLUSIVE PROPERTY OF S. BURNETT & ASSOCIATES LIMITED AND THE REPRODUCTION OF ANY PART WITHOUT PRIOR WRITTEN CONSENT OF THIS OFFICE IS STRICTLY PROHIBITED.

2. THE CONTRACTOR SHALL VERIFY ALL DIMENSIONS, LEVELS AND DATUMS ON-SITE AND REPORT ANY DISCREPANCIES OR OMISSIONS TO THIS OFFICE PRIOR TO CONSTRUCTION.

3. THIS DRAWING IS TO BE READ AND UNDERSTOOD IN CONJUNCTION WITH ALL OTHER PLANS AND DOCUMENTS APPLICABLE TO THIS PROJECT.

4. DO NOT SCALE THE DRAWINGS.

SITE BENCHMARK #1: NAIL ON HYDRO POLE AT THE INTERSECTION OF GORDON AVENUE AND ANDERSON AVENUE, HAVING AN ELEVATION OF 465.21 METRES.

SITE BENCHMARK #2: NAIL ON HYDRO POLE ALONG GORDON AVENUE APPROX. 70m SOUTH EAST FROM SOUTH WEST CORNER OF THE SUBJECT PROPERTY, HAVING AN ELEVATION OF 465.76 METRES.

No.	DATE	ISSUE/REVISION	No.	DATE	ISSUE/REVISION
1.	03-FEB-2026	ISSUED FOR 66% REVIEW			
2.	09-APR-2026	ISSUED FOR RFP			

CLIENT: TOWN OF SHELburnE

PROJECT: PINE GROVE AVENUE RECONSTRUCTION & URBANIZATION

DRAWING TITLE: PROPOSED GRADING PLAN SHEET 2

S. BURNETT & ASSOCIATES LIMITED
ENGINEERING AND ENVIRONMENTAL SERVICES
210 BROADWAY, UNIT 203
ORANGEVILLE, ONTARIO L9W 5G4
TELEPHONE: 519-941-2949 FAX: 519-941-2036

DESIGNED BY: B.A. DRAWN BY: A.P. VERIFIED BY: S.B. DRAWING NO.: M25011

SCALE: 1:200 PROJECT NO.: M25011

C2.4

ALL TREES SHALL BE NO. 1 NURSERY STOCK, 2.5m MINIMUM HEIGHT WITH A MINIMUM CALIPER OF 60mm MEASURED 300mm ABOVE GROUND LEVEL.

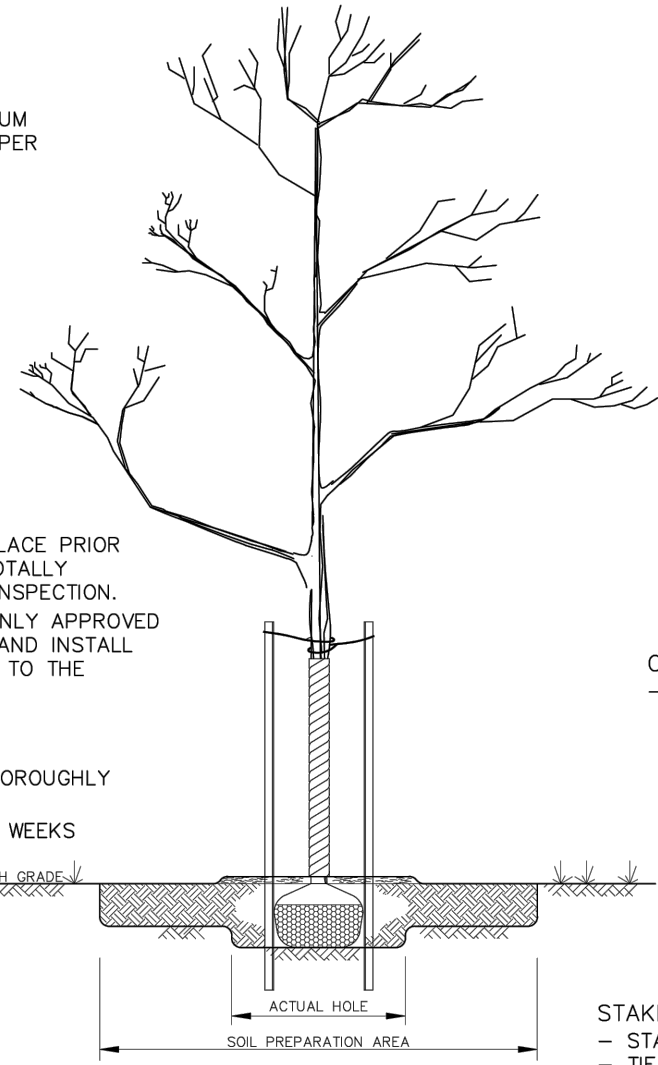
TRUNK PROTECTION:
 - TRUNK WRAPPING IN PLACE PRIOR TO PLANTING TO BE TOTALLY REMOVED FOR TRUNK INSPECTION.
 - WHEN REQUIRED USE ONLY APPROVED TREE WRAP MATERIAL AND INSTALL FROM THE GROUND UP TO THE LOWEST BRANCHES.

WATERING:
 - ENSURE TREES ARE THOROUGHLY WATERED AT PLANTING.
 - WATER EVERY TWO (2) WEEKS THEREAFTER.

MULCHING:
 - MULCH WITH SHREDDED BARK OR COMPOSTED HARDWOOD CHIPS TO A MAXIMUM DEPTH OF 75mm, OVER AN AREA OF THE ROOTBALL. KEEP MULCH 150mm AWAY FROM TRUNK.
 - FOR OTHER TYPES OF MULCHING, REFER TO SPECIFICATIONS.

PLANTING AREA:
 - ACTUAL HOLE TO BE 300mm WIDER AROUND PERIMETER OF ROOTBALL.
 - SOIL PREPARATION AREA TO BE 5X ROOTBALL DIAMETER.
 - SCARIFY SOIL PREPARATION TO A DEPTH OF 300mm FOR AERATION.

IMPORTANT:
 SOME OR ALL NOTES MAY NOT APPLY TO THE SPECIAL REQUIREMENTS OF A SPECIES OR A PLANTING ENVIRONMENT.



SOIL AMENDMENT:
 - EXISTING TOPSOIL TO BE AMENDED WITH TRIPLE-MIX WHERE REQUIRED.

PLANTING SOIL:
 - HOLE TO BE BACKFILLED AND CONCURRENTLY TAMPED AND WATERED TO ELIMINATE AIR POCKETS.

PLANTING DEPTH:
 - IN HEAVY CLAY OR POORLY DRAINED SOIL, ALL WOODY PLANTS TO BE PLACED SO THAT THE ROOT COLLAR IS POSITIONED 75-100mm HIGHER THAN SURROUNDING GRADE.

CROWN PRUNING:
 - PRUNE AT PLANTING TO CAREFULLY REMOVE DEAD, BROKEN, DAMAGED & INTERFERING BRANCHES, DOUBLE LEADERS & NARROW ANGLE BRANCH UNIONS, THIN HEAD WHEN & WHERE APPLICABLE.

STAKES AND TIES:
 - STAKE IMMEDIATELY.
 - TIE USING BIODEGRADABLE MATERIAL SUCH AS FOLDED BURLAP, ETC.
 - STAKES TO BE PLACED TO PREVENT DAMAGE TO ADJACENT BRANCHES.
 - USE 50mm x 50mm x 2m WOOD STAKES OR METAL T-BARS DRIVEN SECURELY INTO GROUND. ALIGN STAKES WITH PREVAILING WINDS.
 - APPLY RODENT PROTECTION WHERE REQUIRED.

ROOTBALL, BURLAP, TWINE:
 - CUT AND REMOVE ALL WIRE, ROPE, BURLAP AND TWINE FROM AROUND TRUNK AND THE TOP 1/3 OF THE ROOTBALL.

BACKGROUND INFORMATION PROVIDED FROM LANDSCAPE ONTARIO.

DECIDUOUS TREE PLANTING DETAIL

ALL TREES SHALL BE NO. 1 NURSERY STOCK, 2.5m MINIMUM HEIGHT WITH A MINIMUM CALIPER OF 60mm MEASURED 300mm ABOVE GROUND LEVEL.

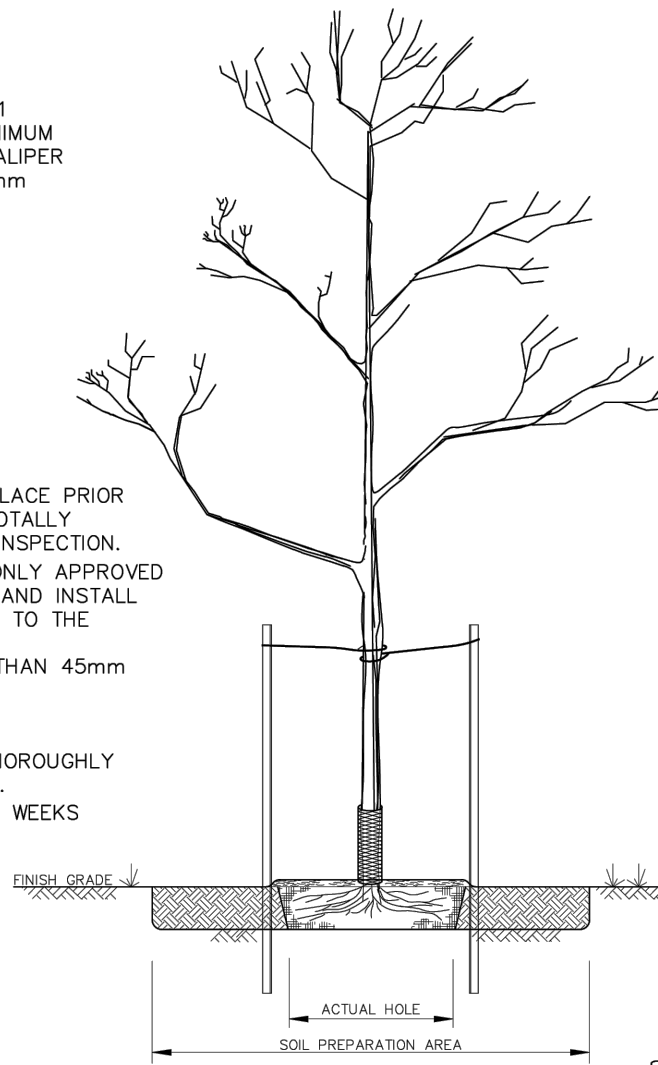
TRUNK PROTECTION:
 - TRUNK WRAPPING IN PLACE PRIOR TO PLANTING TO BE TOTALLY REMOVED FOR TRUNK INSPECTION.
 - WHEN REQUIRED USE ONLY APPROVED TREE WRAP MATERIAL AND INSTALL FROM THE GROUND UP TO THE LOWEST BRANCHES.
 - WRAP TREES LARGER THAN 45mm CALIBER.

WATERING:
 - ENSURE TREES ARE THOROUGHLY WATERED AT PLANTING.
 - WATER EVERY TWO (2) WEEKS THEREAFTER.

MULCHING:
 - MULCH WITH SHREDDED BARK OR COMPOSTED HARDWOOD CHIPS TO A MAXIMUM DEPTH OF 75mm, OVER AN AREA OF THE ROOTBALL. KEEP MULCH 150mm AWAY FROM TRUNK.
 - FOR OTHER TYPES OF MULCHING, REFER TO SPECIFICATIONS.

PLANTING AREA:
 - ACTUAL HOLE TO BE 300mm WIDER AROUND PERIMETER OF ROOT SYSTEM.
 - SOIL PREPARATION AREA TO BE 5X ROOT DIAMETER.
 - SCARIFY SOIL PREPARATION TO A DEPTH OF 300mm FOR AERATION.

IMPORTANT:
 SOME OR ALL NOTES MAY NOT APPLY TO THE SPECIAL REQUIREMENTS OF A SPECIES OR A PLANTING ENVIRONMENT.



SOIL AMENDMENT:
 - EXISTING TOPSOIL TO BE AMENDED WITH TRIPLE-MIX WHERE REQUIRED.

PLANTING SOIL:
 - HOLE TO BE BACKFILLED AND CONCURRENTLY TAMPED AND WATERED TO ELIMINATE AIR POCKETS.

PLANTING DEPTH:
 - PLANT TO BE PLACED SO THAT THE ROOT COLLAR IS POSITIONED AT THE SAME LEVEL AS IN THE NURSERY FIELD.
 - CARE SHOULD BE TAKEN TO AVOID EXCESSIVE SETTLEMENT OF ROOTS FOLLOWING PLANTING.

CROWN PRUNING:
 - PRUNE AT PLANTING TO CAREFULLY REMOVE DEAD, BROKEN, DAMAGED & INTERFERING BRANCHES, DOUBLE LEADERS & NARROW ANGLE BRANCH UNIONS, THIN HEAD WHEN & WHERE APPLICABLE.

STAKES AND TIES:
 - STAKE BEFORE PLANTING.
 - TIE USING BIODEGRADABLE MATERIAL SUCH AS FOLDED BURLAP, ETC.
 - STAKE TO BE PLACED TO PREVENT DAMAGE TO ADJACENT BRANCHES.
 - USE 50mm x 50mm x 2m WOOD STAKE OR METAL T-BAR DRIVEN SECURELY INTO GROUND. ALIGN STAKE WITH PREVAILING WINDS.
 - APPLY RODENT PROTECTION WHERE REQUIRED.

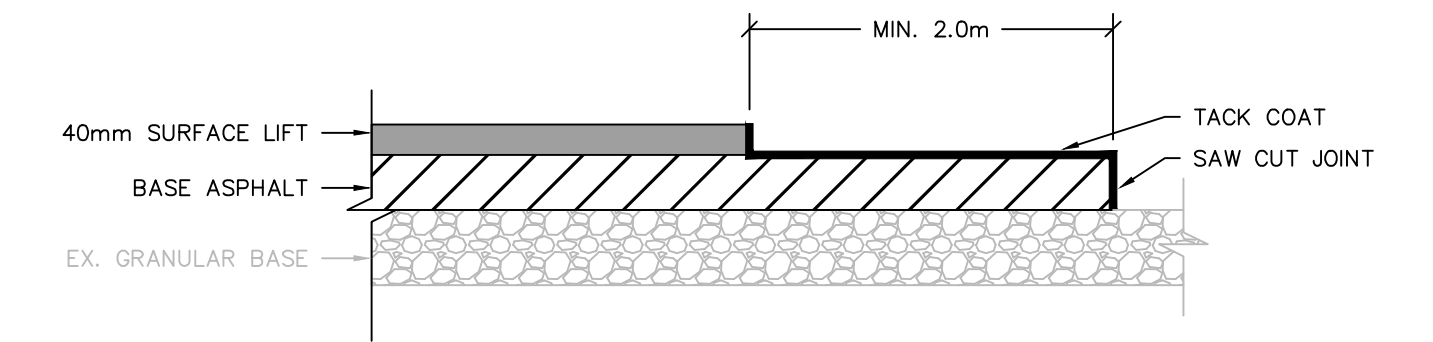
BACKGROUND INFORMATION PROVIDED FROM LANDSCAPE ONTARIO.

BARE-ROOT TREE PLANTING DETAIL

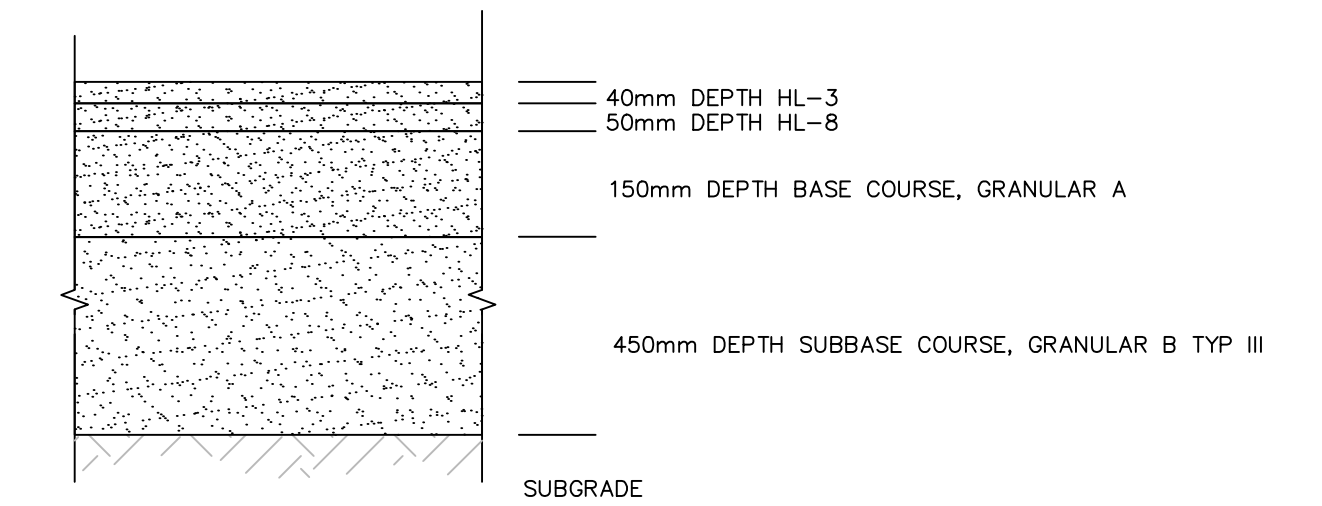
LEGEND:
 S - Rate of pavement superlevation in percent, %.

NOTES:
 1 Flexible and composite pavement shall be placed 5mm above the adjacent edge of gutter.
 2 When sidewalk is continuously adjacent, the dropped curb at entrances shall be reduced to 75mm.
 3 For slipforming procedure a 5% batter is acceptable.
 4 For composite pavement the depth of concrete curb shall be adjusted to depth of depth of concrete pavement.
 5 When tie bars are specified, refer to OPSD 552.010 and 552.020 for details.
 A Treatment at entrances shall be according to OPSD 351.010.
 B Outlet treatment shall be according to the OPSD 610 Series.
 C The transition from one curb type to another shall be a minimum length of 3.0m, except in conjunction with guide rail where it shall be according to the OPSD 900 Series.
 D All dimensions are in millimetres unless otherwise shown.

ONTARIO PROVINCIAL STANDARD DRAWING
 Nov 2012 Rev 2
CONCRETE BARRIER CURB WITH STANDARD GUTTER
 OPSD 600.040

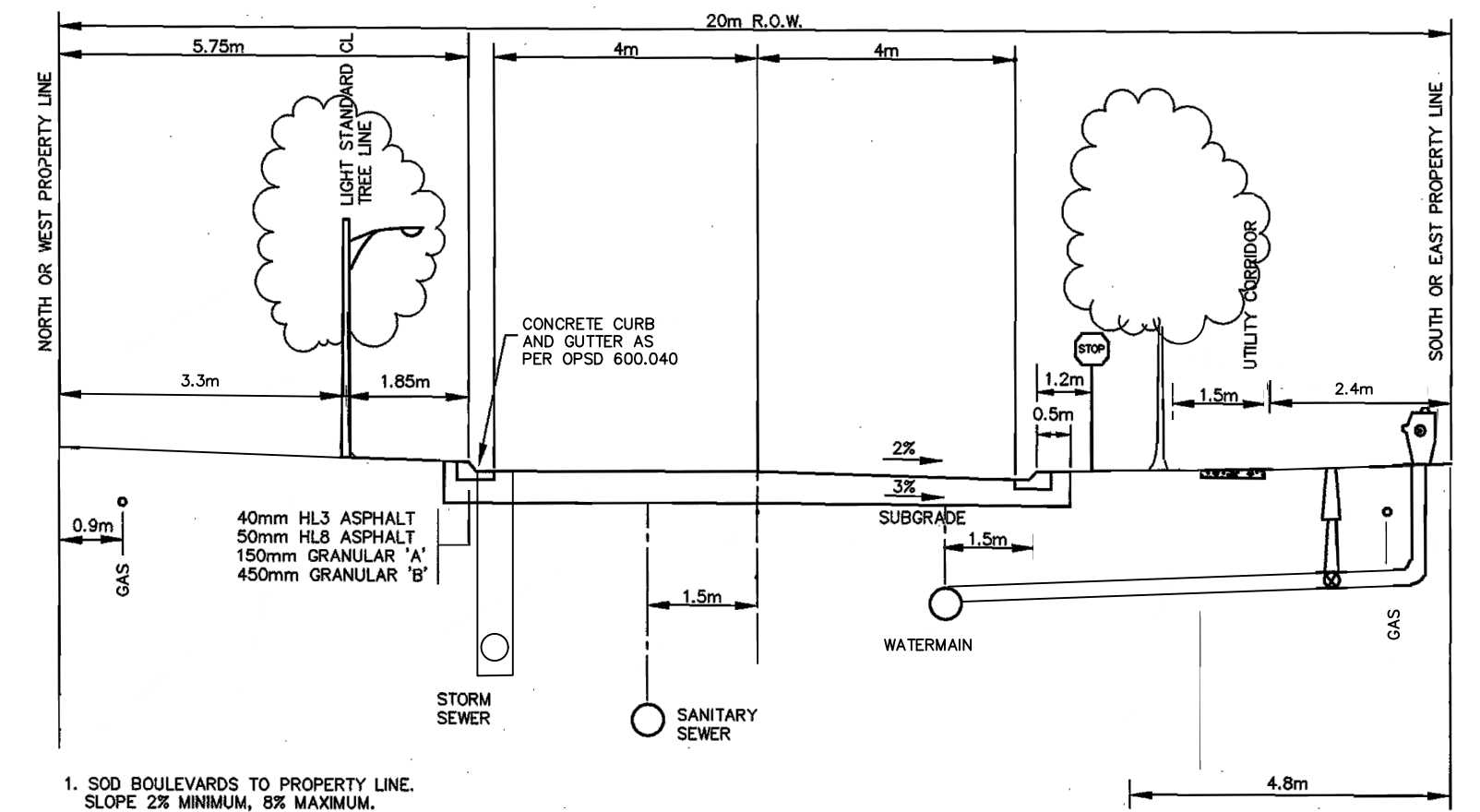


LAP JOINT DETAIL
 NTS



NOTE:
 1. SEE CIVIL PLAN DRAWINGS FOR EXTENTS AND GRADING. MINIMUM 0.5% CROSSFALL.

PROPOSED ROADWAY DESIGN
 NTS



NOTE:
 1. SOD BOULEVARDS TO PROPERTY LINE. SLOPE 2% MINIMUM, BE MAXIMUM.
 2. WATERMAIN COVER TO BE MINIMUM OF 1.8m.

PROPOSED ROADWAY CROSS-SECTION
 N.T.S.

PERSPECTIVE VIEW
 Area under construction
 Area under protection
 Watercourse
 Barrier main run
 End run
 4m end-run
 1m Typ

PLAN
 Direction of flow
 2m max
 Main run 40m max
 4m end-run
 1m Typ

SECTION A-A
 Control measure support
 Geotextile
 300mm min of geotextile in trench
 Stake
 Original ground
 400
 900mm min

JOINT DETAIL

NOTE:
 A All dimensions are in millimetres unless otherwise shown.

ONTARIO PROVINCIAL STANDARD DRAWING
 Nov 2021 Rev 3
HEAVY-DUTY SILT FENCE BARRIER
 OPSD 219.130

WOODLOT EDGE
 4.5m max

WOODLOT
 1.5m min
 1.5m min
 0.75m min
 1.5m

PLAN
 Dripline, Typ
 Barrier at dripline, Typ
 Existing fence
 Limit of grading
 0.75m min
 1.5m
 1.2m min
 Barrier within dripline
 Original ground line

SECTION A-A

ONTARIO PROVINCIAL STANDARD DRAWING
 Nov 2019 Rev 1
BARRIER FOR TREE PROTECTION
 OPSD 220.010

M:\M - MUNICIPAL\ARCHIVAL - 2025\202101 - SHELburne PINEgrove REDESIGN\DRAWINGS\1. SBA CAS & REGIONAL\219.130.001.DWG, CSD: 2021-11-23 10:30:30 AM

- THIS DRAWING IS THE EXCLUSIVE PROPERTY OF S. BURNETT & ASSOCIATES LIMITED AND THE REPRODUCTION OF ANY PART WITHOUT PRIOR WRITTEN CONSENT OF THIS OFFICE IS STRICTLY PROHIBITED.
- THE CONTRACTOR SHALL VERIFY ALL DIMENSIONS, LEVELS AND DATUMS ON-SITE AND REPORT ANY DISCREPANCIES OR OMISSIONS TO THIS OFFICE PRIOR TO CONSTRUCTION.
- THIS DRAWING IS TO BE READ AND UNDERSTOOD IN CONJUNCTION WITH ALL OTHER PLANS AND DOCUMENTS APPLICABLE TO THIS PROJECT.
- DO NOT SCALE THE DRAWINGS.

No.	DATE	ISSUE/REVISION	No.	DATE	ISSUE/REVISION
1.	03-FEB-2026	ISSUED FOR 66% REVIEW			
2.	09-APR-2026	ISSUED FOR RFP			

CLIENT: TOWN OF SHELburne

PROJECT: SHELburne PINEgrove REDESIGN

DRAWING TITLE: STANDARD DETAILS

DESIGNED BY: B.A. DRAWN BY: A.P. VERIFIED BY: S.B. DRAWING No.: C5.1

SCALE: PROJECT No.: M25011

DATE: 2025

S. BURNETT & ASSOCIATES LIMITED
 ENGINEERING AND ENVIRONMENTAL SERVICES
 210 BROADWAY, UNIT 203
 ORANGEVILLE, ONTARIO L9W 5G4
 TELEPHONE: 519-941-2949 FAX: 519-941-2036

